



# BRIKclad

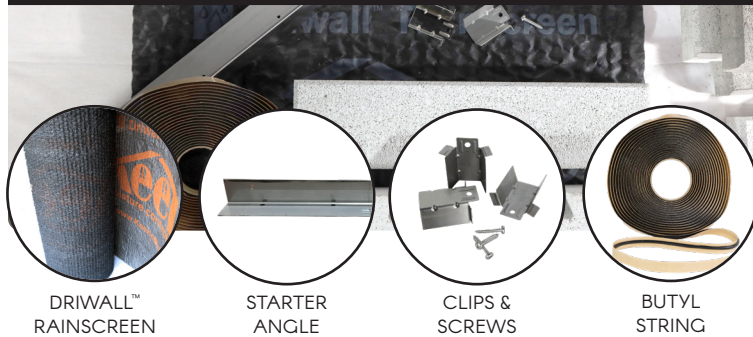
## MAXUM DRY-STACK

**Maxum Dry-Stack** is a **Canadian made**, large-format **concrete bevelled brick** that installs like siding – no mortar required!

Maxum Dry-Stack features a simple, one-step installation method that makes it DIY-friendly and allows for rapid installation\*.

Its versatile design allows for installation by all types of labor across all wall types and in any weather condition.

### FROM START TO FINISH, THE COMPLETE SYSTEM FOR YOUR NEXT PROJECT!



DRIWALL™  
RAINSREEN

STARTER  
ANGLE

CLIPS &  
SCREWS

BUTYL  
STRING

*\*Use one clip per brick for walls under 30 feet high and two clips per brick for walls 30 feet and taller.*



COASTLINE



PENDANT GREY



RIDGEWAY



SET IN BRICK » COAL | Maxum Dry-Stack

### Specs & Colours



Length: 15.3" | 390 mm  
Height: 3.5" | 90 mm  
Thickness: 1.8" | 45 mm  
Available Colours: 7



COAL



DOVE WHITE



PHANTOM GREY



FINLAND<sup>†</sup> | **Non-Stocked**

**Looking for a mortared look?** Maxum can be installed with a traditional mortared format. We recommend you reach out to your local technical representative for details.

To learn more, please contact your local Technical Sales Representative or our Customer Service team. CSI-All Things Stone | The Exclusive Home of BRIKclad.

T: 1-800-977-8663 W: [www.AllThingsStone.com](http://www.AllThingsStone.com)

Proudly Distributed By

**CSI**  
All things Stone ... and more

