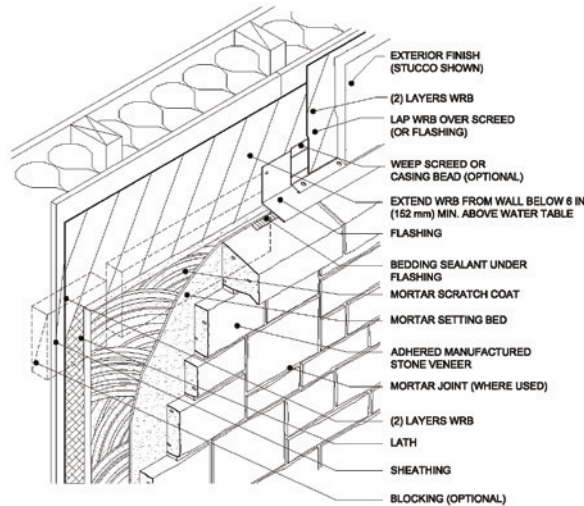


Cultured Stone®

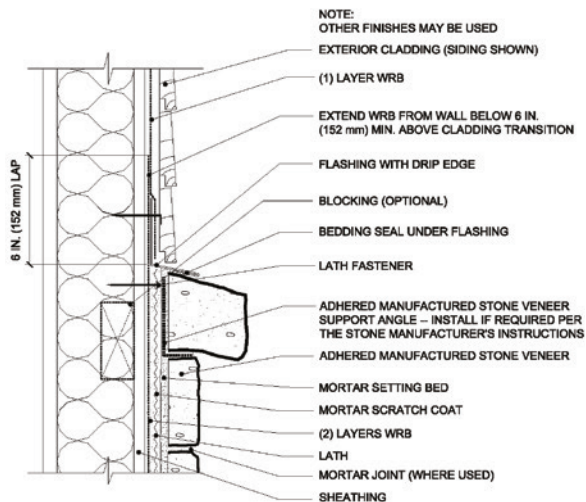
by BORAL®

DRAWINGS AND CROSS SECTIONS

WALL ASSEMBLY



CLADDING TRANSITION



OUTSIDE CORNER

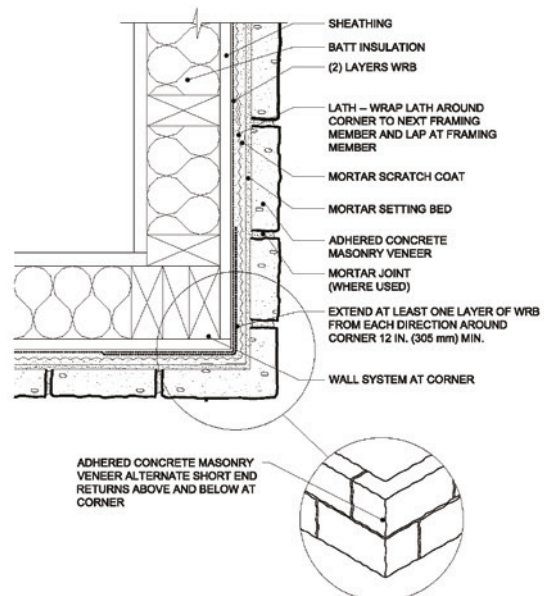


TABLE OF DRAWINGS AND CROSS SECTIONS

FIGURE 1. WALL ASSEMBLY.....	4
FIGURE 2. TYPICAL WALL SECTION.....	4
FIGURE 3. FOUNDATION WALL BASE.....	5
FIGURE 4. FOUNDATION WALL BASE-AMSV OVERLAPPING.....	5
FIGURE 5. FOUNDATION WALL-TRANSITION TO AMSV CONTINUING DOWN FOUNDATION.....	6
FIGURE 6. CLADDING FOUNDATION.....	6
FIGURE 7. OUTSIDE CORNER.....	7
FIGURE 8. INSIDE CORNER.....	7
FIGURE 9. HORIZONTAL TRANSITION.....	8
FIGURE 10. VERTICAL TRANSITION.....	8
FIGURE 11. OPEN EAVE-OVERHANG.....	9
FIGURE 12. OPEN EAVE-FLUSH.....	9
FIGURE 13. RAKE-OVERHANG.....	10
FIGURE 14. RAKE-FLUSH.....	10
FIGURE 15. SIDE WALL-COMPOSITION SHINGLES.....	11
FIGURE 16. SIDE WALL-COMPOSITION SHINGLES CURBING.....	11
FIGURE 17. SIDE WALL-TILE ROOFING.....	12
FIGURE 18. SIDE WALL-TILE ROOFING CURBING.....	12
FIGURE 19. WINDOW SILL.....	13
FIGURE 20. WINDOW JAMB.....	13
FIGURE 21. WINDOW HEAD.....	14
FIGURE 22. KICK-OUT FLASHING.....	14
FIGURE 23. CRICKET.....	15
FIGURE 24. CHIMNEY CHASE.....	15
FIGURE 25. COLUMN BASE.....	16
FIGURE 26. RAISED COLUMN BASE.....	16
FIGURE 27. PENETRATION, FLANGED.....	17
FIGURE 28. PENETRATION NON-FLANGED, WITH BUILDING PAPER WRB.....	17
FIGURE 29. PENETRATION NON-FLANGED, WITH HOUSEWRAP WRB.....	18
FIGURE 30. PENETRATION FIXTURE.....	18
FIGURE 31. PENETRATION, DRYER VENT.....	19
FIGURE 32. DECK TERMINATION.....	19
FIGURE 33. WALL CAP.....	20
FIGURE 34. WALL ASSEMBLY-OPTIONAL RAINSCREEN SYSTEM-DRAINAGE SYSTEMS.....	20
FIGURE 35. WALL ASSEMBLY-OPTIONAL RAINSCREEN SYSTEM-STRAPPED.....	21
FIGURE 36. FOUNDATION WALL BASE-OPTIONAL RAINSCREEN SYSTEM.....	21
FIGURE 37. TYPICAL WALL SECTION-OPTIONAL RAINSCREEN SYSTEM.....	22

These construction details are provided to assist in the installation of Boral® Cultured Stone® product(s). These construction details will not necessarily apply to every design circumstance that you encounter. These construction details may, and most likely will, require modifications to meet your particular design requirements. Manufacturer accepts no responsibility or liability for the use of these or other construction details.

TABLE OF DRAWINGS AND CROSS SECTIONS (CONTINUED)

FIGURE 38. RETAINING WALL (CMU).....	22
FIGURE 39. WALL-SECTION INTERIOR OVER CEMENT BACKER BOARD.....	23
FIGURE 40. FORWARD MOUNTED COMMERCIAL WINDOW.....	23
FIGURE 41. FORWARD MOUNTED COMMERCIAL WINDOW-TOP VIEW.....	24
FIGURE 42. COMMERCIAL STOREFRONT WINDOW-TOP VIEW.....	24
FIGURE 43. COMMERCIAL STOREFRONT WINDOW.....	25
FIGURE 44. WALL-SECTION MULTI-FLOOR JOINT DETAIL.....	25
FIGURE 45. WALL-SECTION OVER RIGID INSULATION WITH ADDITIONAL SHEATHING.....	26
FIGURE 46. WALL-SECTION OVER CONTINUOUS RIGID INSULATION CMU.....	26
FIGURE 47. WALL-SECTION INSIDE CORNER WITH STUCCO-TOP VIEW.....	27
FIGURE 48. WALL-SECTION INSULATED CONCRETE FORM (ICF)-TOP VIEW.....	27
FIGURE 49. WALL-SECTION OVER CONTINUOUS RIGID INSULATION WITH Z CHANNELS-TOP VIEW.....	28
FIGURE 50. WALL-SECTION OVER CONTINUOUS RIGID INSULATION.....	28
FIGURE 51. WALL-SECTION PARAPET WITH STONE CAP.....	29
FIGURE 52. WALL-SECTION PARAPET WITH STEEL CAP.....	29

Disclaimer

This guide addresses generally accepted methods and details for the installation of Adhered Manufactured Stone Veneer. To the best of our knowledge, it is correct and up-to-date. However, the document is designed only as a guide; and it is not intended for any specific construction project. Canadian Stone Industries makes no express or implied warranty or guarantee of the techniques, construction methods or materials or materials identified herein.

It is understood that there are alternative means or methods that might be required and/or recommended based on project conditions, manufacturer's recommendations, or product characteristics.

This Guide for builders, architects, designers, masons, installers and other construction professionals illustrates typical applications of Adhered Manufactured Stone Veneer. Details in this guide that address the installation and detailing of Adhered Manufactured Stone Veneer and its interface with other building components are not intended as specific recommends. It is the responsibility of all design and construction professionals to determine the applicability and appropriate application and any detail to any specific project.

These construction details are provided to assist in the installation of Boral® Cultured Stone® product(s). These construction details will not necessarily apply to every design circumstance that you encounter. These construction details may, and most likely will, require modifications to meet your particular design requirements. Manufacturer accepts no responsibility or liability for the use of these or other construction details.

FIGURE 1. WALL ASSEMBLY

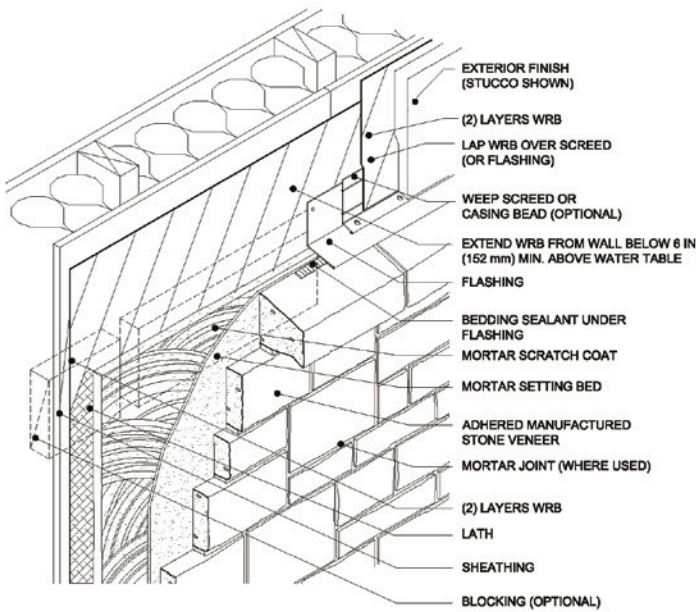
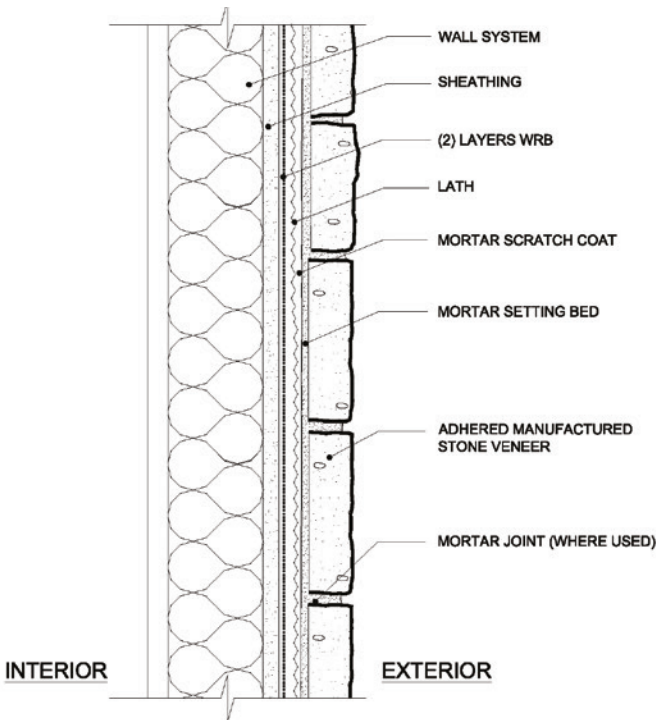


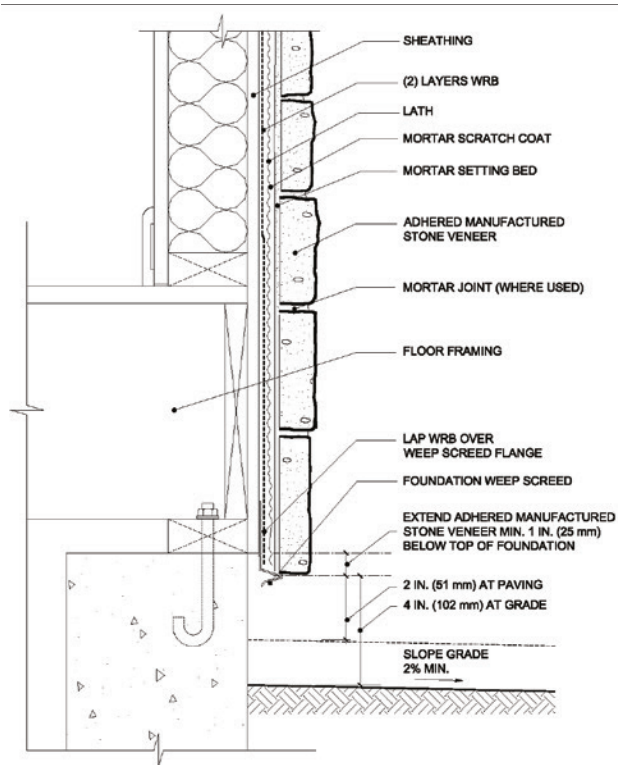
FIGURE 2. TYPICAL WALL SECTION



SECTION VIEW

Note: layering of sheathing, water resistive barrier, lath, scratch coat, and adhered manufactured stone veneer.

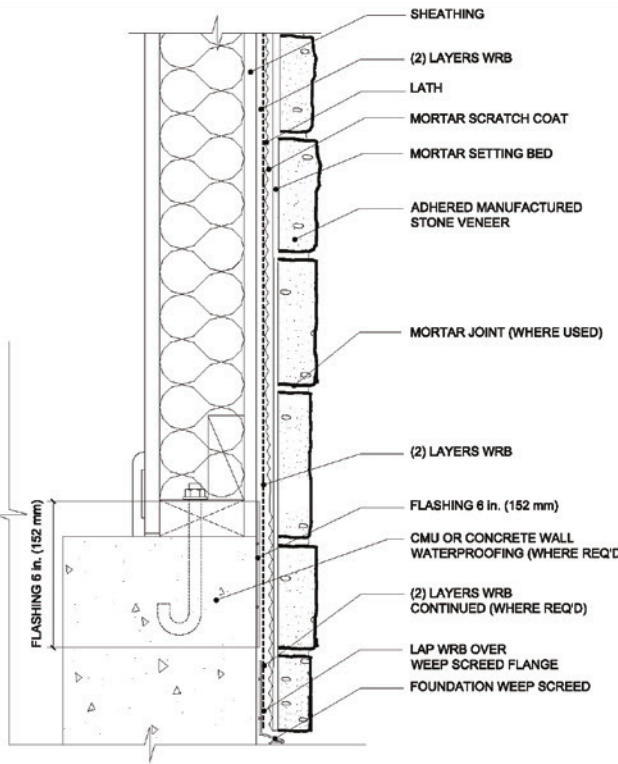
FIGURE 3. FOUNDATION WALL BASE



SECTION VIEW

A minimum 4 in. (102 mm) gap is required at the base of the stud wall to grade and a minimum 2 in. (51 mm) gap is required at base of the stud wall to a paved surface.

FIGURE 4. FOUNDATION WALL BASE-AMSV OVERLAPPING FOUNDATION



SECTION VIEW

AMSV may overlap foundation wall with careful installation of flashing and WRB. This installation may continue down foundation wall to grade clearance.

These construction details are provided to assist in the installation of Boral® Cultured Stone® product(s). These construction details will not necessarily apply to every design circumstance that you encounter. These construction details may, and most likely will, require modifications to meet your particular design requirements. Manufacturer accepts no responsibility or liability for the use of these or other construction details.

These construction details are provided to assist in the installation of Boral® Cultured Stone® product(s). These construction details will not necessarily apply to every design circumstance that you encounter. These construction details may, and most likely will, require modifications to meet your particular design requirements. Manufacturer accepts no responsibility or liability for the use of these or other construction details.

FIGURE 5. FOUNDATION WALL-TRANSITION TO AMSV CONTINUING DOWN FOUNDATION

SECTION VIEW

AMSV may continue down the foundation with the incorporation of a flashing transition with careful installation of WRB and flashing.

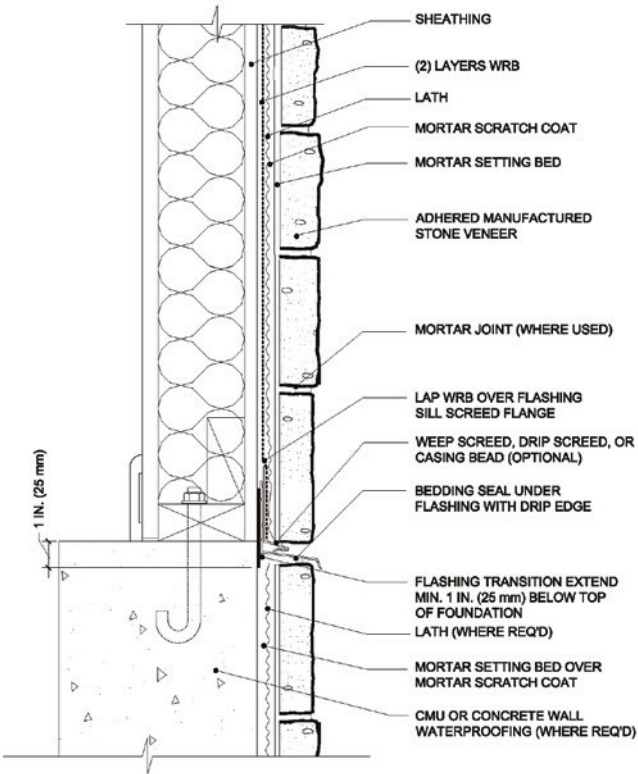
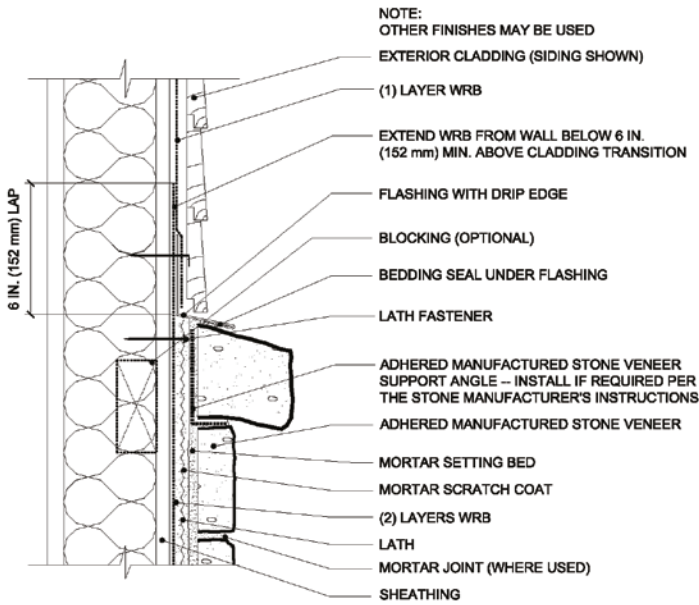


FIGURE 6. CLADDING TRANSITION

SECTION VIEW

Flashing should be installed prior to the adhered manufactured stone. Water resistive barrier laps over the vertical leg of flashing for positive drainage. Optional support angle shown. Verify installation requirements with adhered manufactured stone veneer manufacturer.

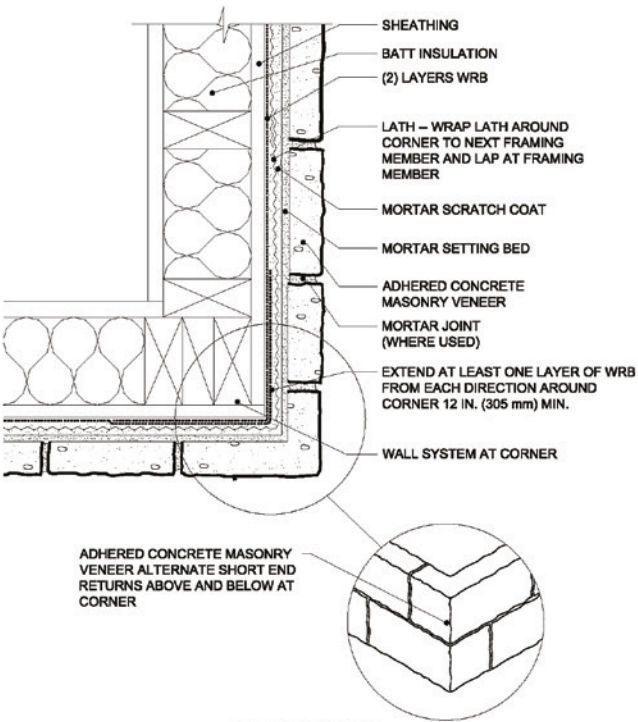


These construction details are provided to assist in the installation of Boral® Cultured Stone® product(s). These construction details will not necessarily apply to every design circumstance that you encounter. These construction details may, and most likely will, require modifications to meet your particular design requirements. Manufacturer accepts no responsibility or liability for the use of these or other construction details.

FIGURE 7. OUTSIDE CORNER

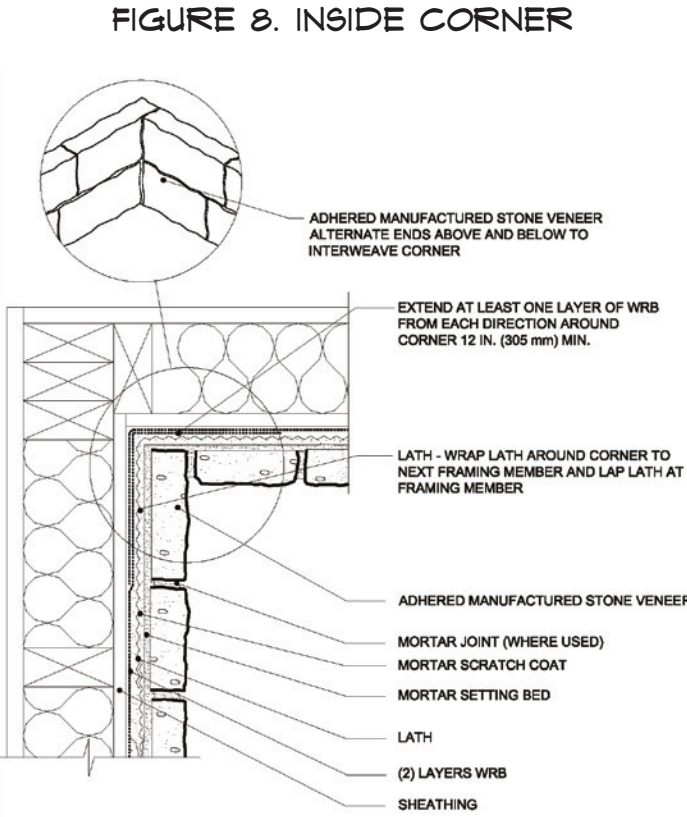
PLAN VIEW

Randomly alternate short end returns above and below at the corner. Lap lath around the corner to the next framing member.



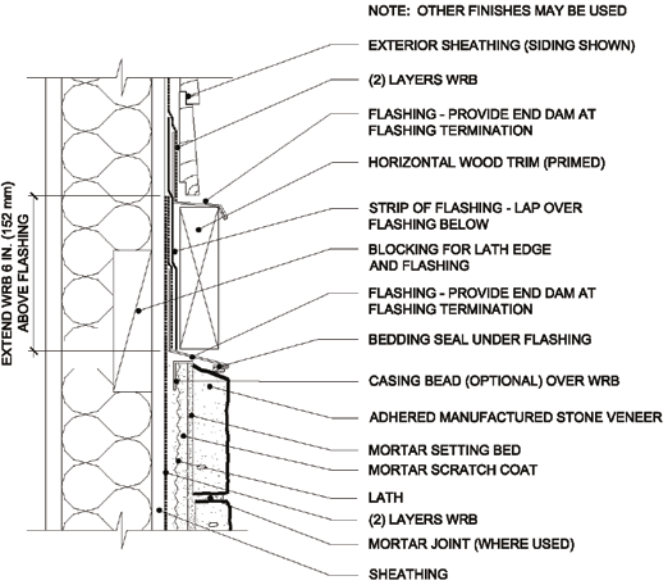
PLAN VIEW

Randomly alternate ends above and below to interweave the corner. Double wrap water resistive barrier around both sides of the corner. Lap lath to the framing at least 12 inches (305 mm) to the next framing member.



These construction details are provided to assist in the installation of Boral® Cultured Stone® product(s). These construction details will not necessarily apply to every design circumstance that you encounter. These construction details may, and most likely will, require modifications to meet your particular design requirements. Manufacturer accepts no responsibility or liability for the use of these or other construction details.

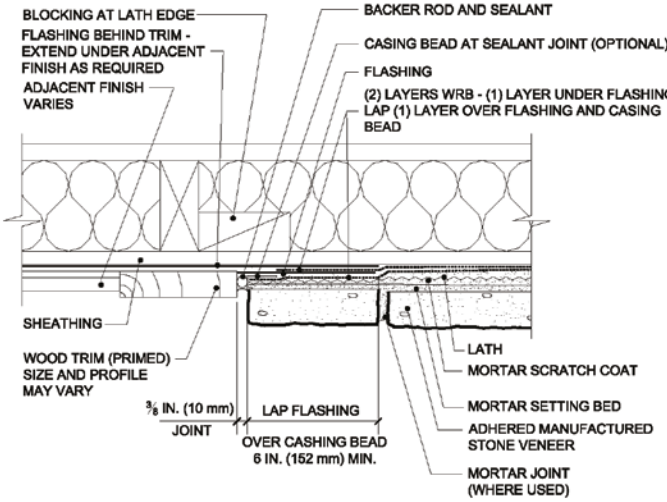
FIGURE 9. HORIZONTAL TRANSITION



SECTION VIEW

Note: flashing is lapped shingle-fashion with corrosion resistant sheet metal. A bedding seal is used under the corrosion resistant sheet metal next to the adhered manufactured stone veneer.

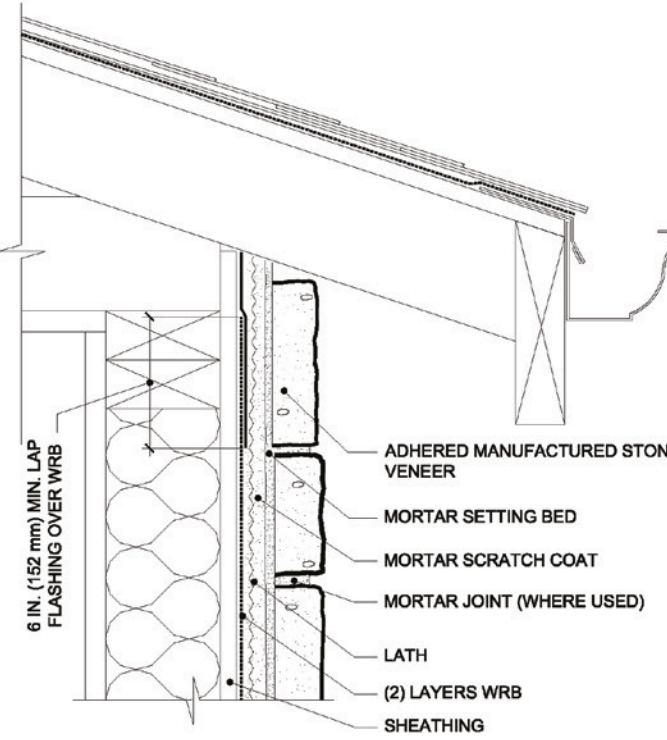
FIGURE 10. VERTICAL TRANSITION



PLAN VIEW

Flashing extends under the adjacent finishes. A 5/8 in. (10 mm) minimum gap should be used between finishes.

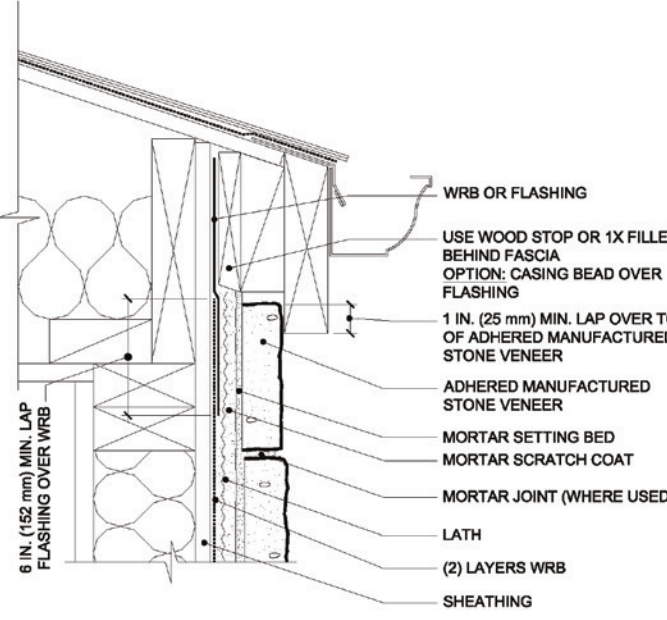
FIGURE 11. OPEN EAVE-OVERHANG



SECTION VIEW

Water resistive barrier should be in place prior to soffit installation followed by adhered manufactured stone veneer.

FIGURE 12. OPEN EAVE-FLUSH



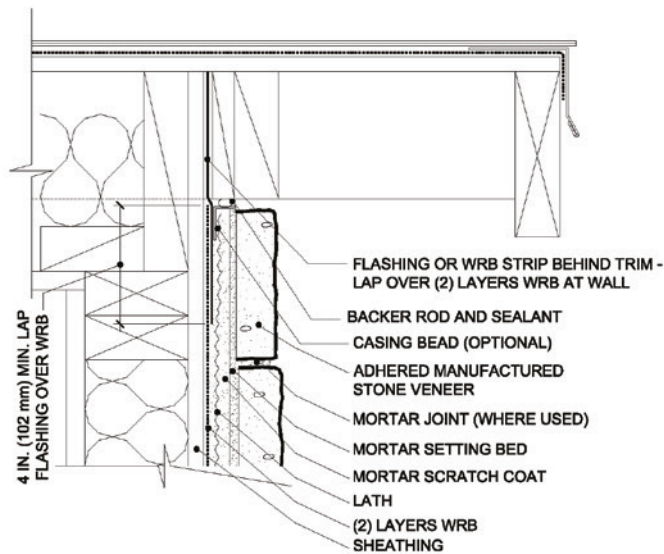
SECTION VIEW

Flashing extends under the adjacent finishes. A 5/8 in. (10 mm) minimum gap should be used between finishes.

These construction details are provided to assist in the installation of Boral® Cultured Stone® product(s). These construction details will not necessarily apply to every design circumstance that you encounter. These construction details may, and most likely will, require modifications to meet your particular design requirements. Manufacturer accepts no responsibility or liability for the use of these or other construction details.

These construction details are provided to assist in the installation of Boral® Cultured Stone® product(s). These construction details will not necessarily apply to every design circumstance that you encounter. These construction details may, and most likely will, require modifications to meet your particular design requirements. Manufacturer accepts no responsibility or liability for the use of these or other construction details.

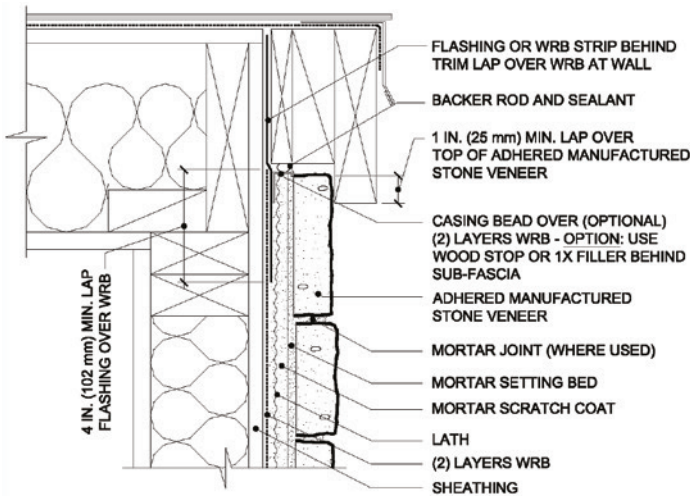
FIGURE 13. RAKE-OVERHANG



SECTION VIEW

The intent of these details is to limit exposure to wind driven rain.

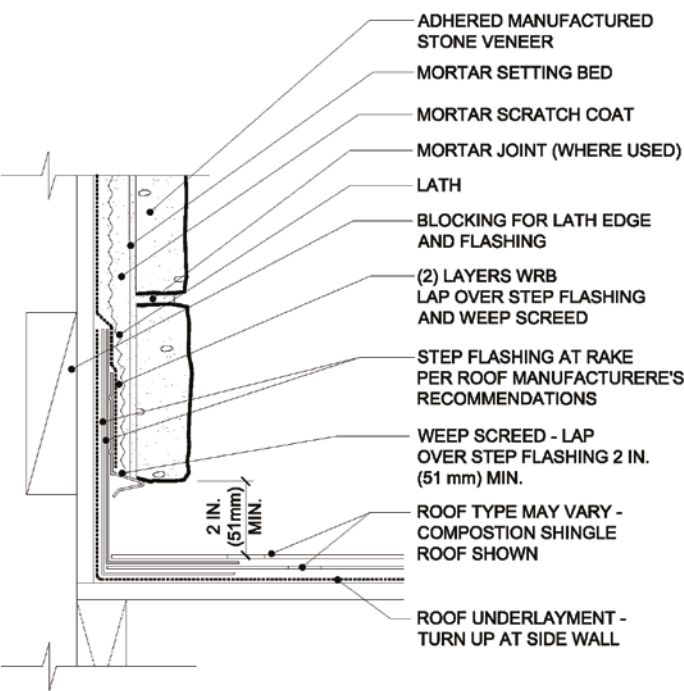
FIGURE 14. RAKE-FLUSH



SECTION VIEW

Note: the use of backer rod and sealant.

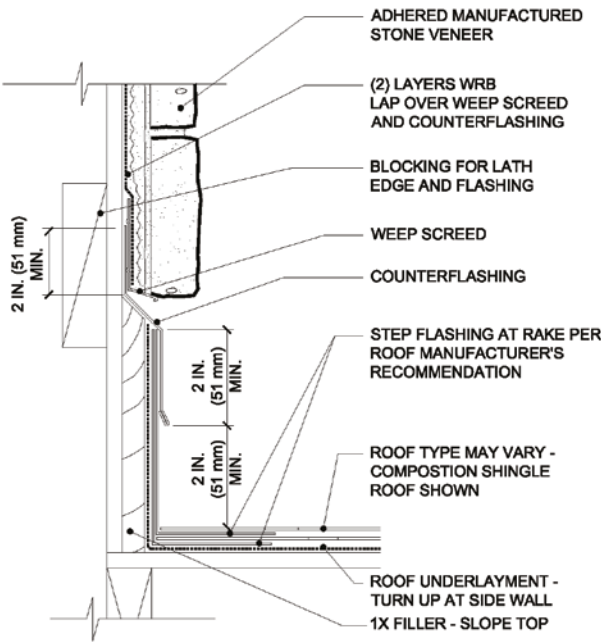
FIGURE 15. SIDE WALL-COMPOSITION SHINGLES



SECTION VIEW

Water resistive barrier laps over step flashing and weep screed.

FIGURE 16. SIDE WALL-COMPOSITION SHINGLES CURBING



SECTION VIEW

This detail includes base trim. Note the counterflashing between trim and adhered manufactured stone veneer.

These construction details are provided to assist in the installation of Boral® Cultured Stone® product(s). These construction details will not necessarily apply to every design circumstance that you encounter. These construction details may, and most likely will, require modifications to meet your particular design requirements. Manufacturer accepts no responsibility or liability for the use of these or other construction details.

These construction details are provided to assist in the installation of Boral® Cultured Stone® product(s). These construction details will not necessarily apply to every design circumstance that you encounter. These construction details may, and most likely will, require modifications to meet your particular design requirements. Manufacturer accepts no responsibility or liability for the use of these or other construction details.

FIGURE 17. SIDE WALL-TILE ROOFING

DETAIL VIEW

Water resistive barrier laps over step flashing and weep screed.

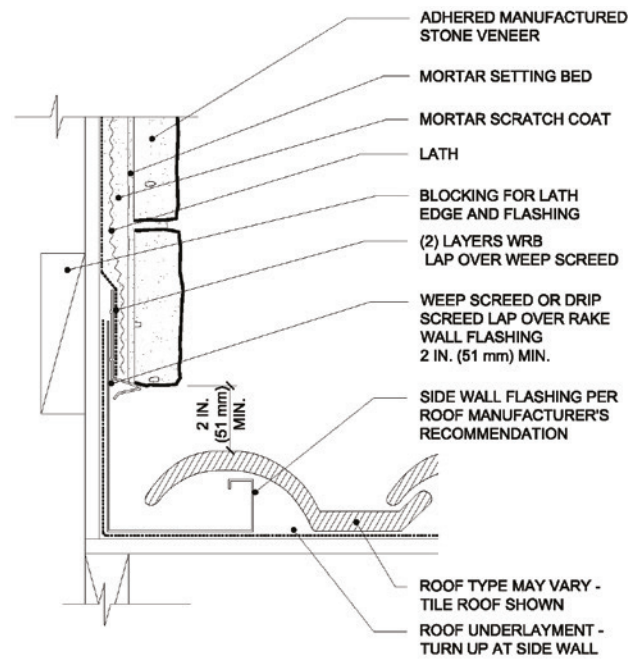
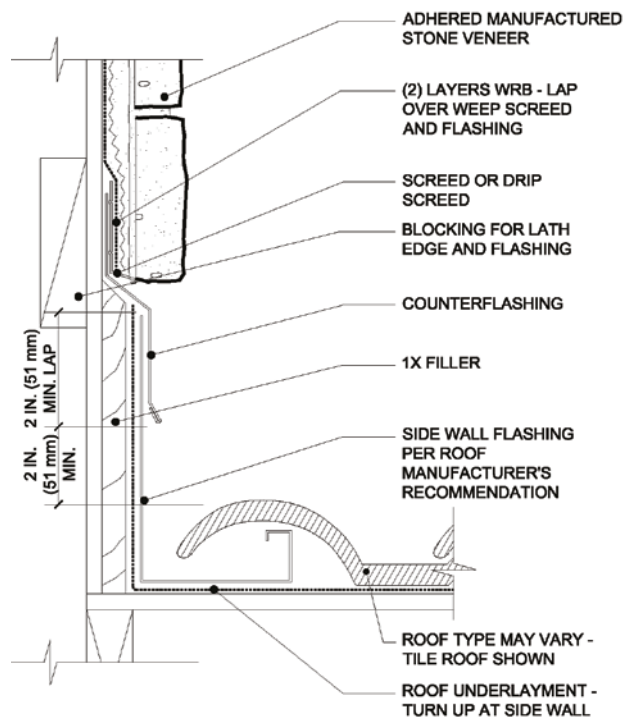


FIGURE 18. SIDE WALL-TILE ROOFING CURBING

DETAIL VIEW

This detail includes curbing. Note the counterflashing between trim and adhered manufactured stone veneer.



These construction details are provided to assist in the installation of Boral® Cultured Stone® product(s). These construction details will not necessarily apply to every design circumstance that you encounter. These construction details may, and most likely will, require modifications to meet your particular design requirements. Manufacturer accepts no responsibility or liability for the use of these or other construction details.

FIGURE 19. WINDOW SILL

DETAIL VIEW

Rough openings must be properly flashed prior to window installation. Tuck water resistive barrier under flashing at sill. Sill flashing should drain to the exterior of the primary WRB or to exterior of adhered manufactured stone veneer.

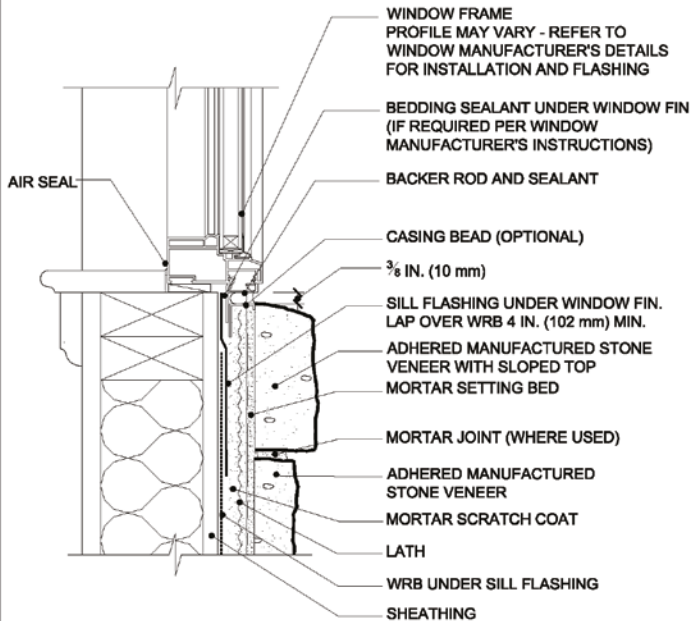
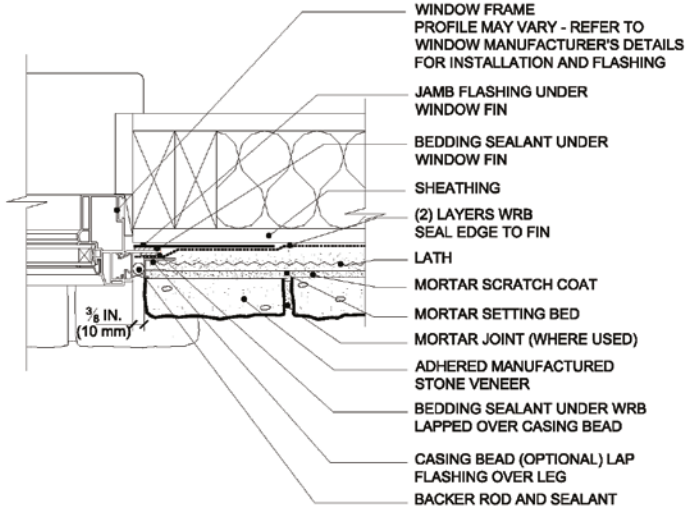


FIGURE 20. WINDOW JAM

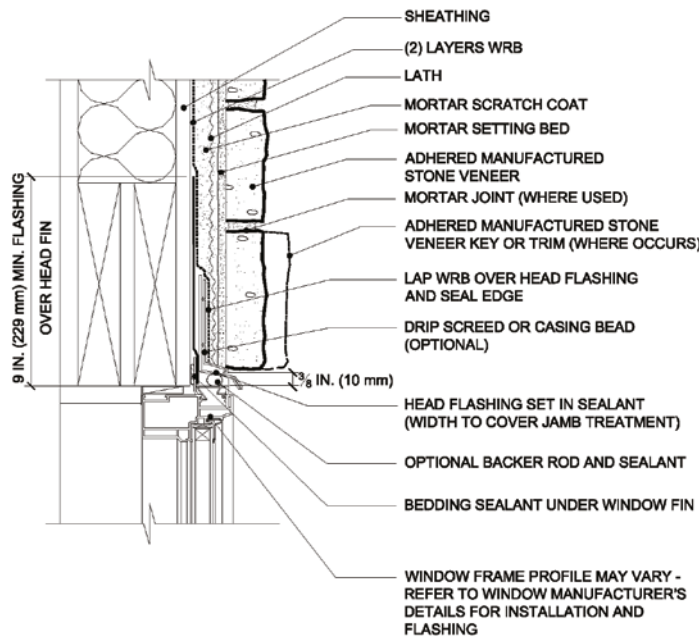
PLAN VIEW

Rough openings must be properly flashed prior to window installation. Backer rod and sealant between the window frame and the adhered manufactured stone veneer allows for movement between the dissimilar materials.



These construction details are provided to assist in the installation of Boral® Cultured Stone® product(s). These construction details will not necessarily apply to every design circumstance that you encounter. These construction details may, and most likely will, require modifications to meet your particular design requirements. Manufacturer accepts no responsibility or liability for the use of these or other construction details.

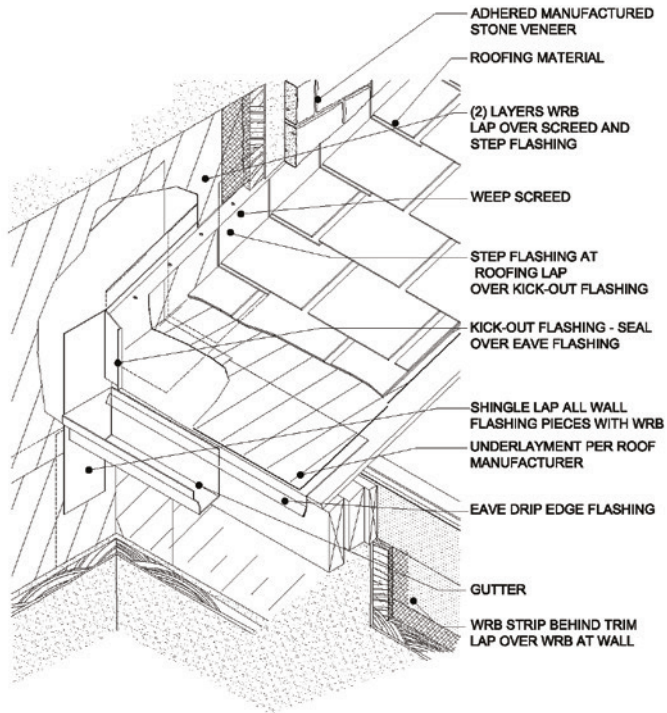
FIGURE 21. WINDOW HEAD



DETAIL VIEW

Flashing and WRB installed shingle fashion may be complimented with self-adhered flashing to seal WRB to window frame.

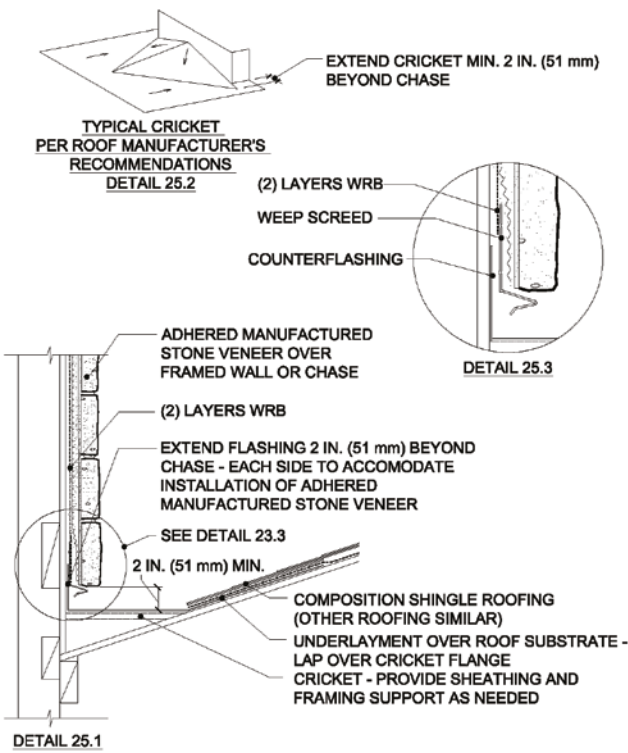
FIGURE 22. KICK-OUT FLASHING



ISOMETRIC VIEW

Kickout flashing should be sized properly to accommodate thickness of AMSV. Integration of WRB, flashing and kick-out critical.

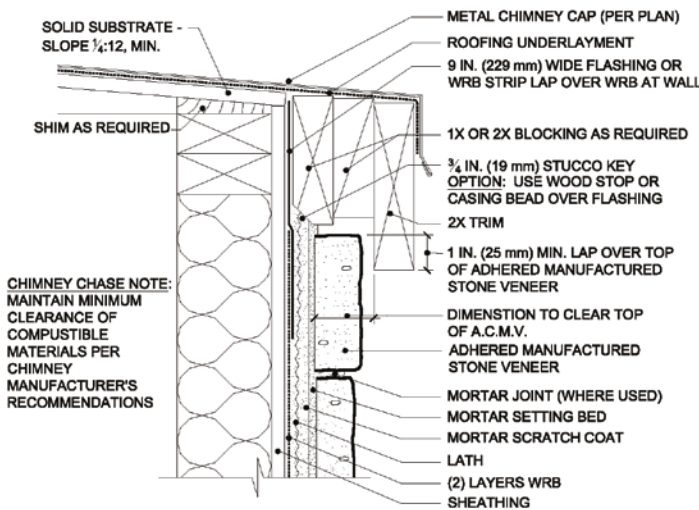
FIGURE 23. CRICKET



DETAIL VIEW

A cricket up-slope of a roof penetration, such as a chimney, helps direct water around the penetration.

FIGURE 24. CHIMNEY CHASE

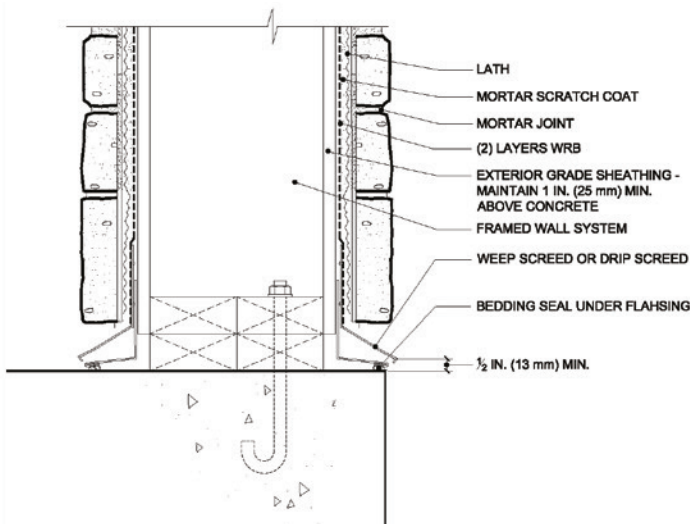


SECTION VIEW

These construction details are provided to assist in the installation of Boral® Cultured Stone® product(s). These construction details will not necessarily apply to every design circumstance that you encounter. These construction details may, and most likely will, require modifications to meet your particular design requirements. Manufacturer accepts no responsibility or liability for the use of these or other construction details.

These construction details are provided to assist in the installation of Boral® Cultured Stone® product(s). These construction details will not necessarily apply to every design circumstance that you encounter. These construction details may, and most likely will, require modifications to meet your particular design requirements. Manufacturer accepts no responsibility or liability for the use of these or other construction details.

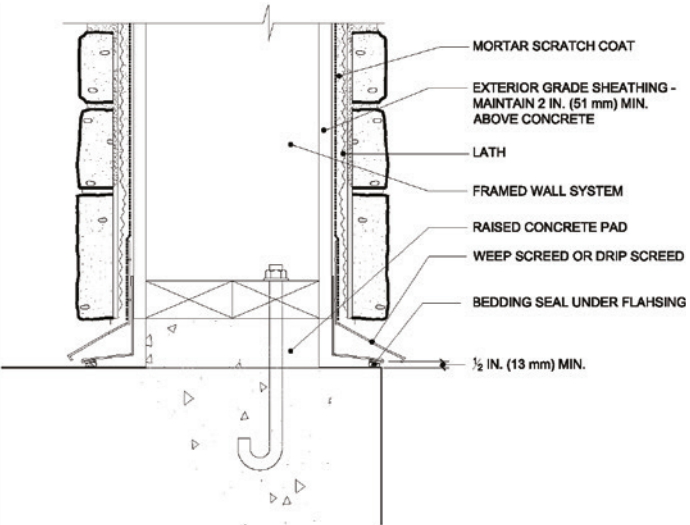
FIGURE 25. COLUMN BASE



SECTION VIEW

A minimum one half inch (13 mm) clearance should be maintained at all sides of the base. All column materials to be exterior grade. Do not extend flashing past edge of AMSV for safety reasons.

FIGURE 26. RAISED COLUMN BASE



DETAIL VIEW

Adhered manufactured stone veneer may overlap the raised concrete pad, but a clearance of one half inch (13 mm) should be maintained at all sides of the base. Do not extend flashing past edge of AMSV.

ISOMETRIC VIEW

Adhered manufactured stone veneer may overlap the raised concrete pad, but a clearance of one half inch (13 mm) should be maintained at all sides of the base. Do not extend flashing past edge of AMSV.

FIGURE 27. PENETRATION, FLANGED

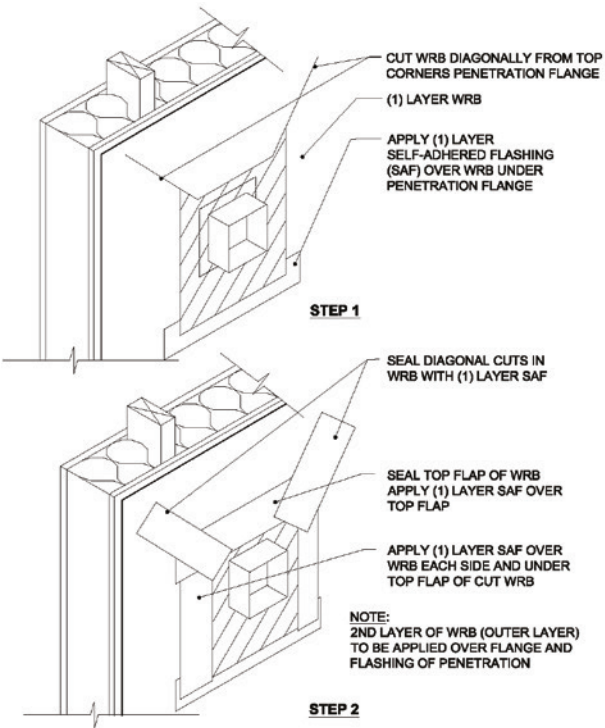
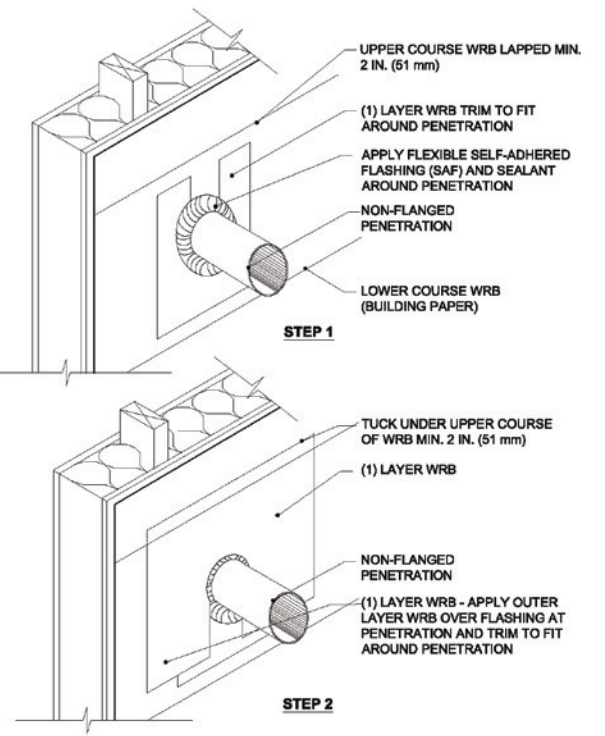


FIGURE 28. PENETRATION NON-FLANGED, WITH BUILDING PAPER WRB



ISOMETRIC VIEW

Flexible self-adhered flashing and WRB installed in a watershed fashion help prevent water infiltration.

These construction details are provided to assist in the installation of Boral® Cultured Stone® product(s). These construction details will not necessarily apply to every design circumstance that you encounter. These construction details may, and most likely will, require modifications to meet your particular design requirements. Manufacturer accepts no responsibility or liability for the use of these or other construction details.

These construction details are provided to assist in the installation of Boral® Cultured Stone® product(s). These construction details will not necessarily apply to every design circumstance that you encounter. These construction details may, and most likely will, require modifications to meet your particular design requirements. Manufacturer accepts no responsibility or liability for the use of these or other construction details.

FIGURE 29. PENETRATION NON-FLANGED, WITH HOUSEWRAP PAPER

ISOMETRIC VIEW

Flexible self-adhered flashing around the penetration and WRB lapped in a watershed fashion help prevent water infiltration.

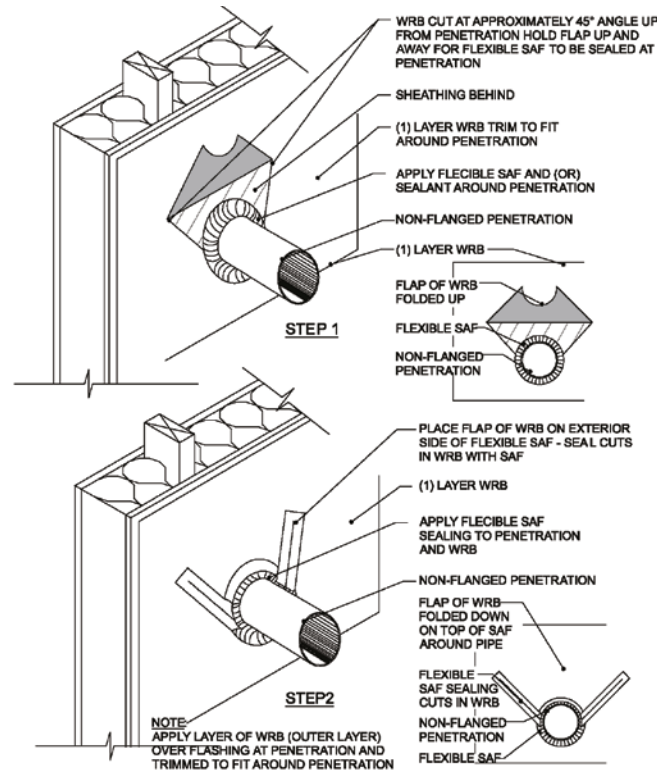
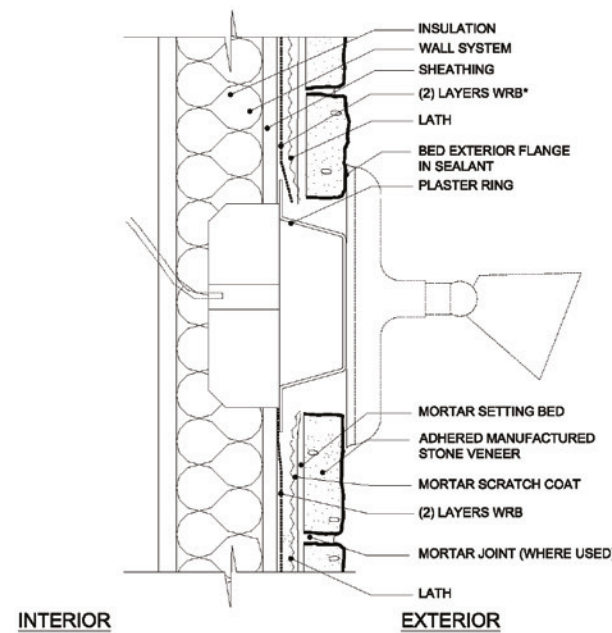


FIGURE 30. PENETRATION, FIXTURE

SECTION VIEW

Plaster rings should be affixed over the service box to bring the face of the box flush with the adhered manufactured stone veneer. Bed the exterior flange in sealant. Water resistive barrier should be installed snugly around the plaster ring flange.



SECTION VIEW

Bed all covers, flanges, and escutcheons in sealant before fastening to the wall

FIGURE 31. PENETRATION, DRYER VENT

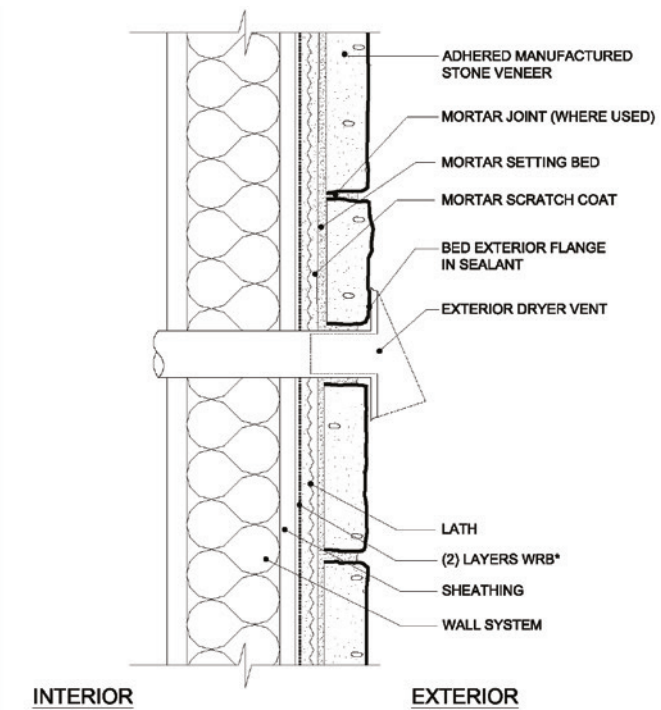


FIGURE 32. DECK TERMINATION

SECTION VIEW

Lap water resistive barrier over weep screed and floor framing to manage water intrusion. Provide gap between adhered manufactured stone veneer and decking for drainage. Water management at the deck ledger boards is critical, and may vary based on the building design.

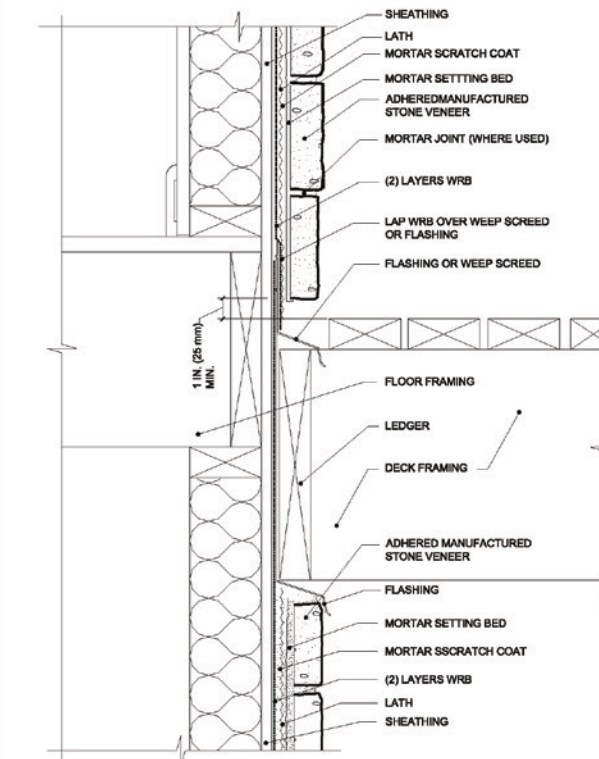
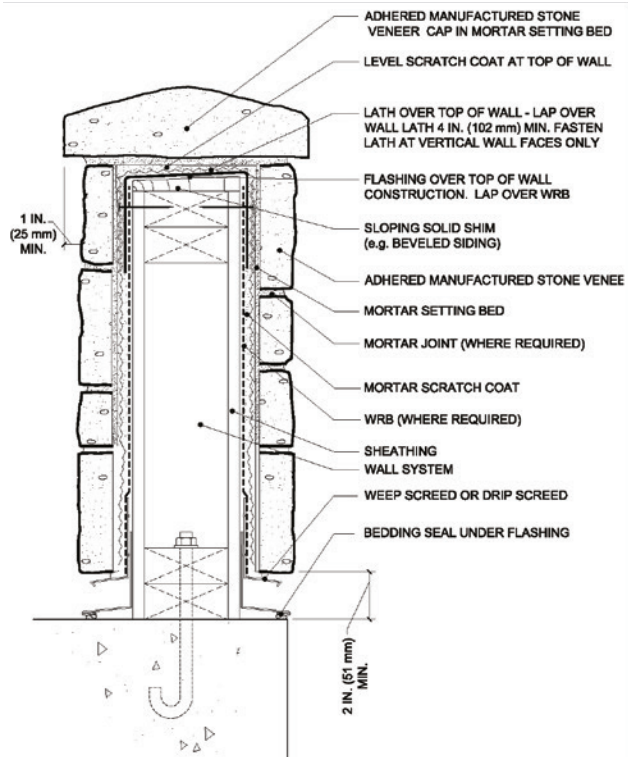


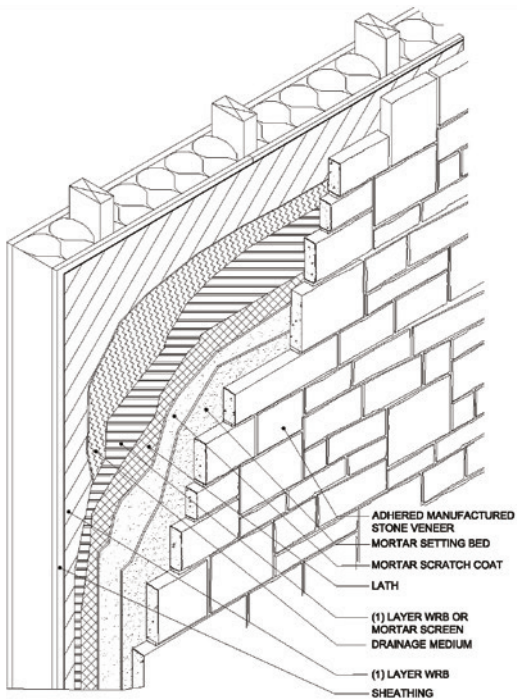
FIGURE 33. WALL CAP



SECTION VIEW

A sloping solid shim should top the wall under the flashing and lath. Flashing should lap the top of the wall. Lath should lap over the top of the wall but be fastened only to vertical wall faces.

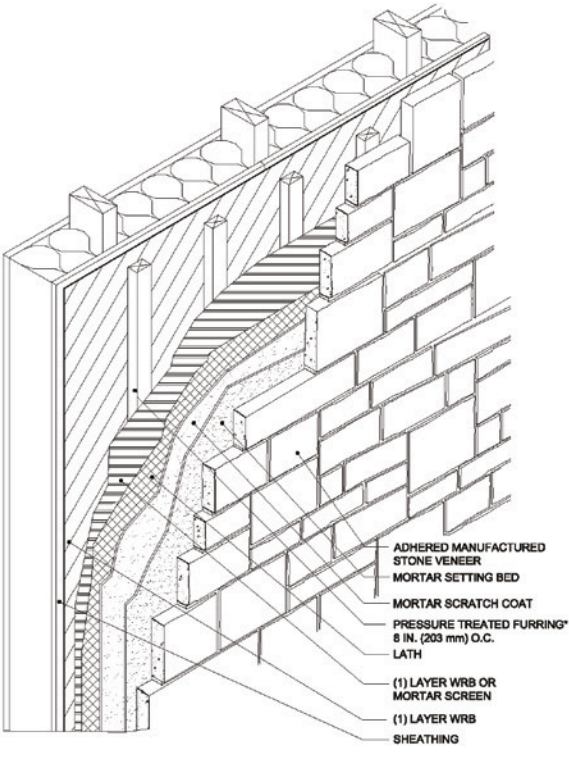
FIGURE 34. WALL ASSEMBLY-OPTIONAL RAINSCREEN SYSTEM-DRAINAGE SYSTEMS



ISOMETRIC VIEW

A rainscreen system incorporating a drainage medium (drainage mat or formed polymer sheeting, etc.) on the exterior side of the primary WRB.

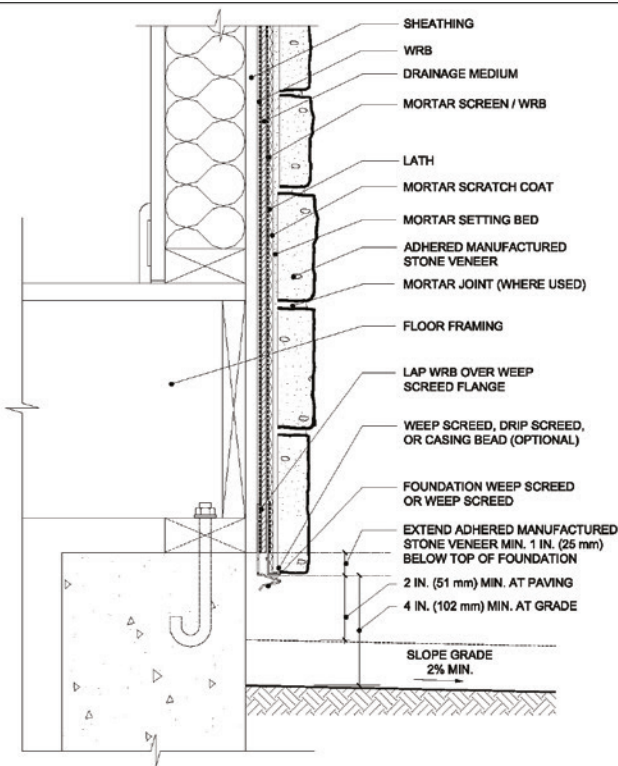
FIGURE 35. WALL ASSEMBLY-OPTIONAL RAINSCREEN SYSTEMS-STRAPPED



ISOMETRIC VIEW

A rainscreen system of vertical strapping I furring creates a vertical gap between the primary WRB and the mortar screen I WRB on the back of the scratch coat. *Furring fastened into framing and into nailable sheathing between framing.

FIGURE 36. FOUNDATION WALL BASE-OPTIONAL RAINSCREEN SYSTEM



SECTION VIEW

The “Drainage Medium” of this wall section represents rainscreen products (such as drainage mats or formed polymer sheeting, etc.) or construction techniques (such as strapping or furring).

These construction details are provided to assist in the installation of Boral® Cultured Stone® product(s). These construction details will not necessarily apply to every design circumstance that you encounter. These construction details may, and most likely will, require modifications to meet your particular design requirements. Manufacturer accepts no responsibility or liability for the use of these or other construction details.

These construction details are provided to assist in the installation of Boral® Cultured Stone® product(s). These construction details will not necessarily apply to every design circumstance that you encounter. These construction details may, and most likely will, require modifications to meet your particular design requirements. Manufacturer accepts no responsibility or liability for the use of these or other construction details.

FIGURE 37. TYPICAL WALL SECTION-OPTIONAL RAINDSCREEN SYSTEM

SECTION VIEW

The “Drainage Medium” of this wall section represents rainscreen products (such as drainage mats or formed polymer sheeting, etc.) or construction techniques (such as strapping or furring).

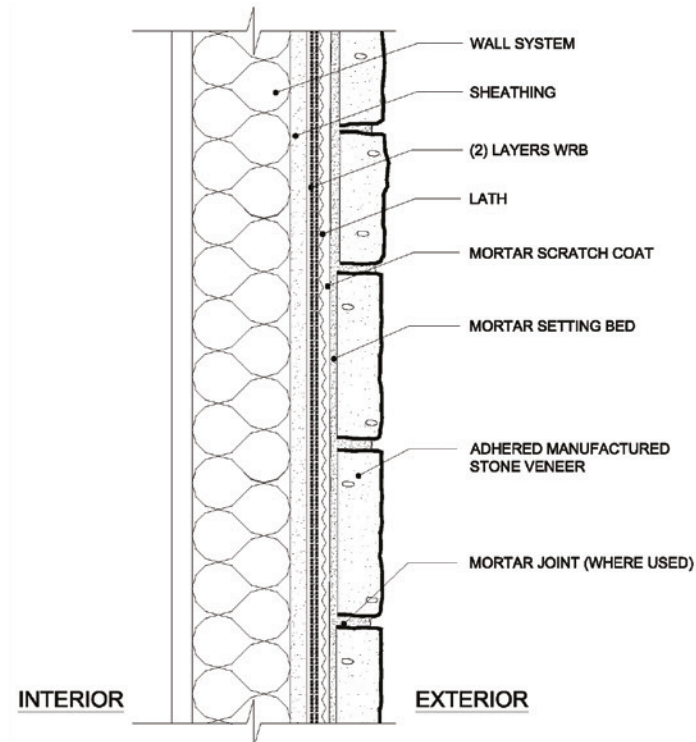


FIGURE 38. RETAINING WALL (CMU)

SECTION VIEW

Adhered masonry veneer offers attractive aesthetics to retaining walls.

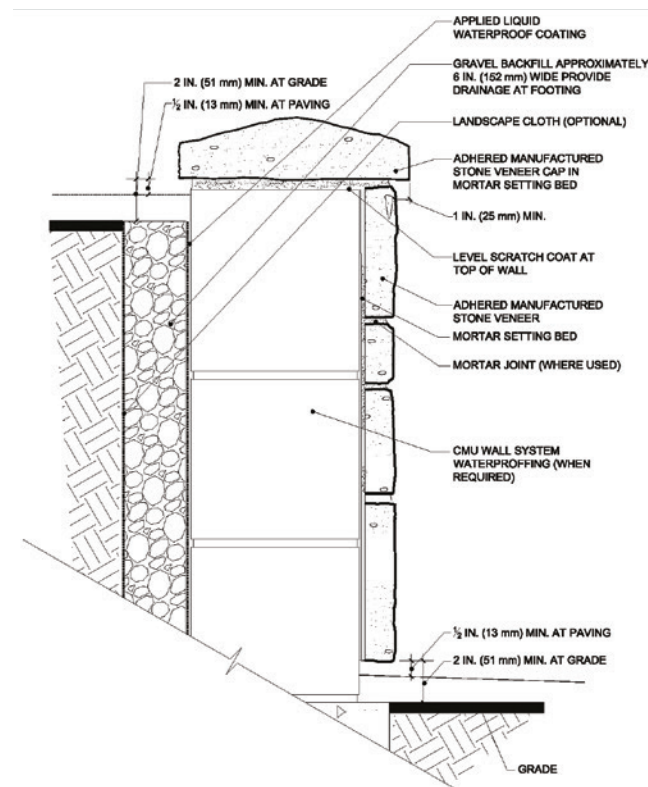


FIGURE 39. WALL-SECTION INTERIOR OVER CEMENT BACKER BOARD

SECTION VIEW

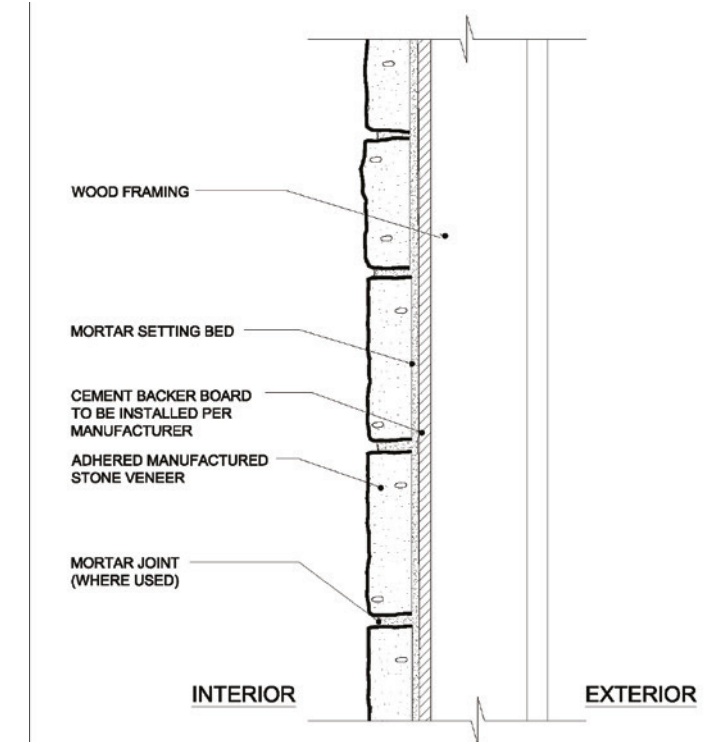
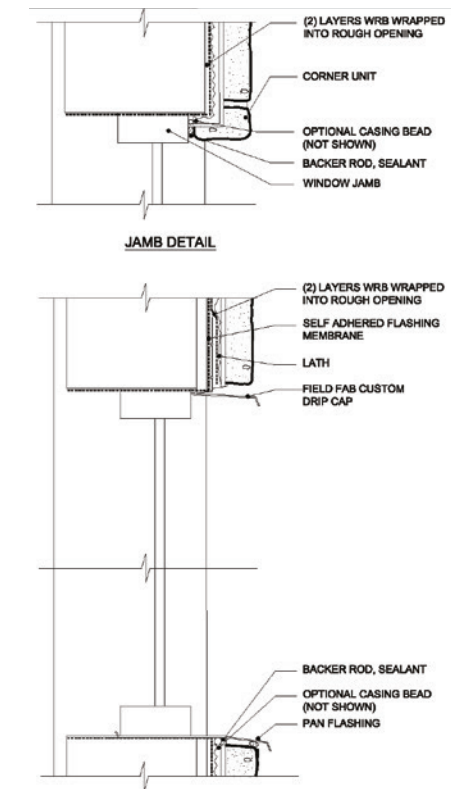


FIGURE 40. FORWARD MOUNTED COMMERCIAL WINDOW

SECTION VIEW



These construction details are provided to assist in the installation of Boral® Cultured Stone® product(s). These construction details will not necessarily apply to every design circumstance that you encounter. These construction details may, and most likely will, require modifications to meet your particular design requirements. Manufacturer accepts no responsibility or liability for the use of these or other construction details.

These construction details are provided to assist in the installation of Boral® Cultured Stone® product(s). These construction details will not necessarily apply to every design circumstance that you encounter. These construction details may, and most likely will, require modifications to meet your particular design requirements. Manufacturer accepts no responsibility or liability for the use of these or other construction details.

FIGURE 41. FORWARD MOUNTED COMMERCIAL WINDOW-TOP VIEW

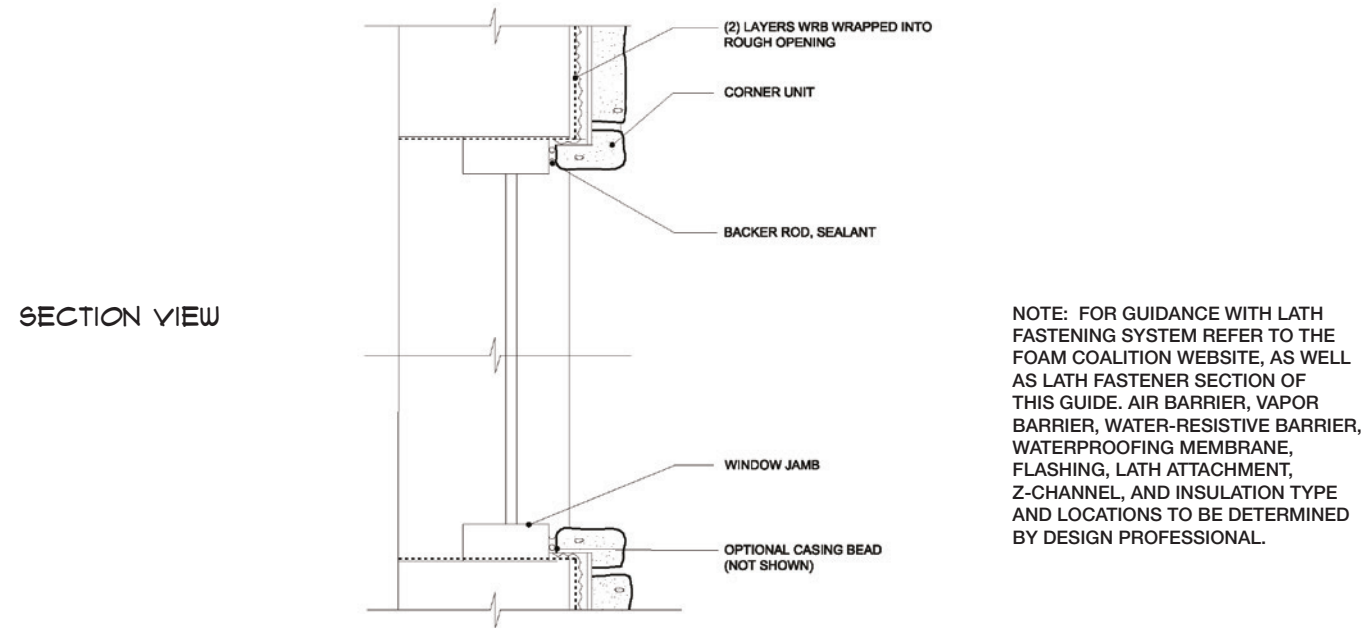


FIGURE 43. COMMERCIAL STOREFRONT WINDOW

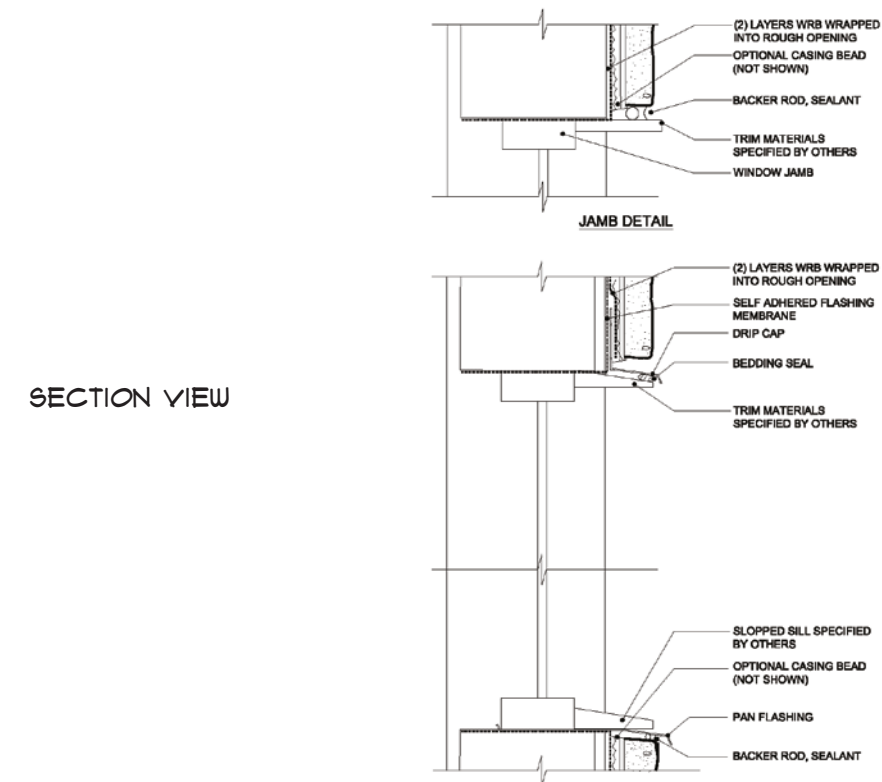


FIGURE 42. COMMERCIAL STOREFRONT WINDOW-TOP VIEW

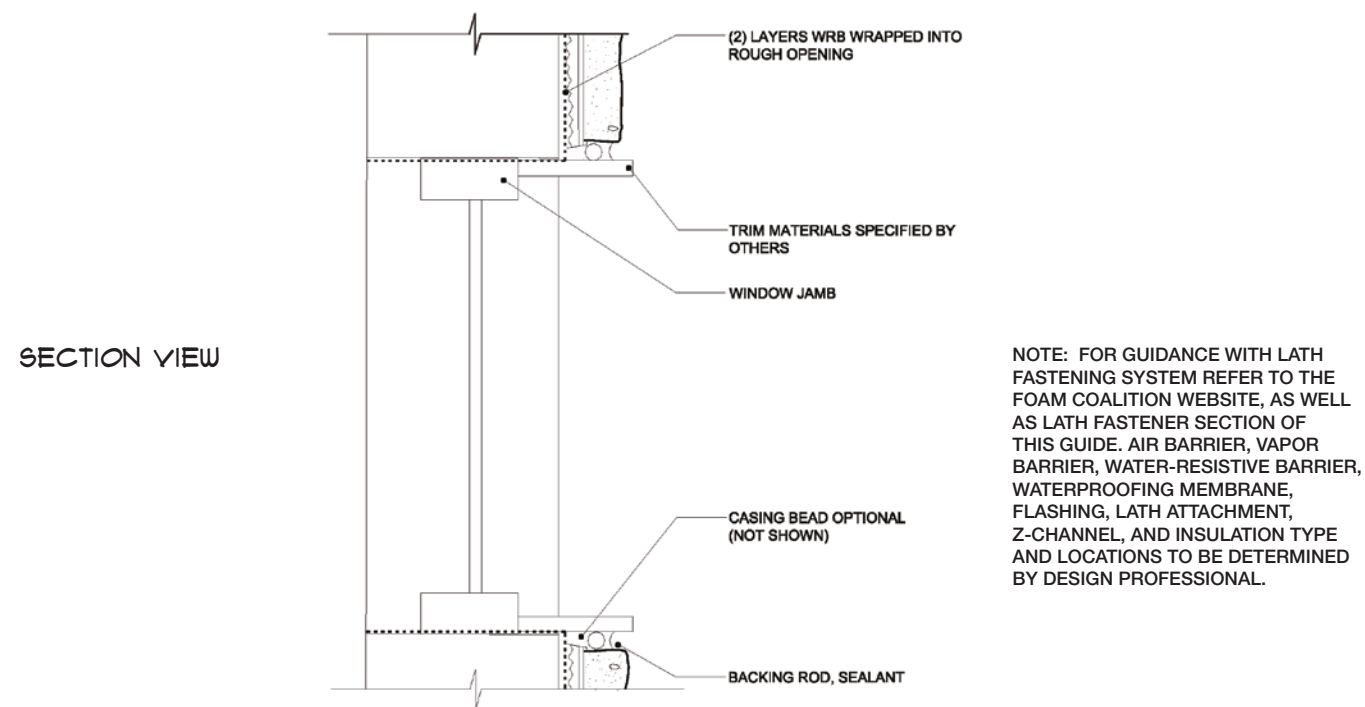
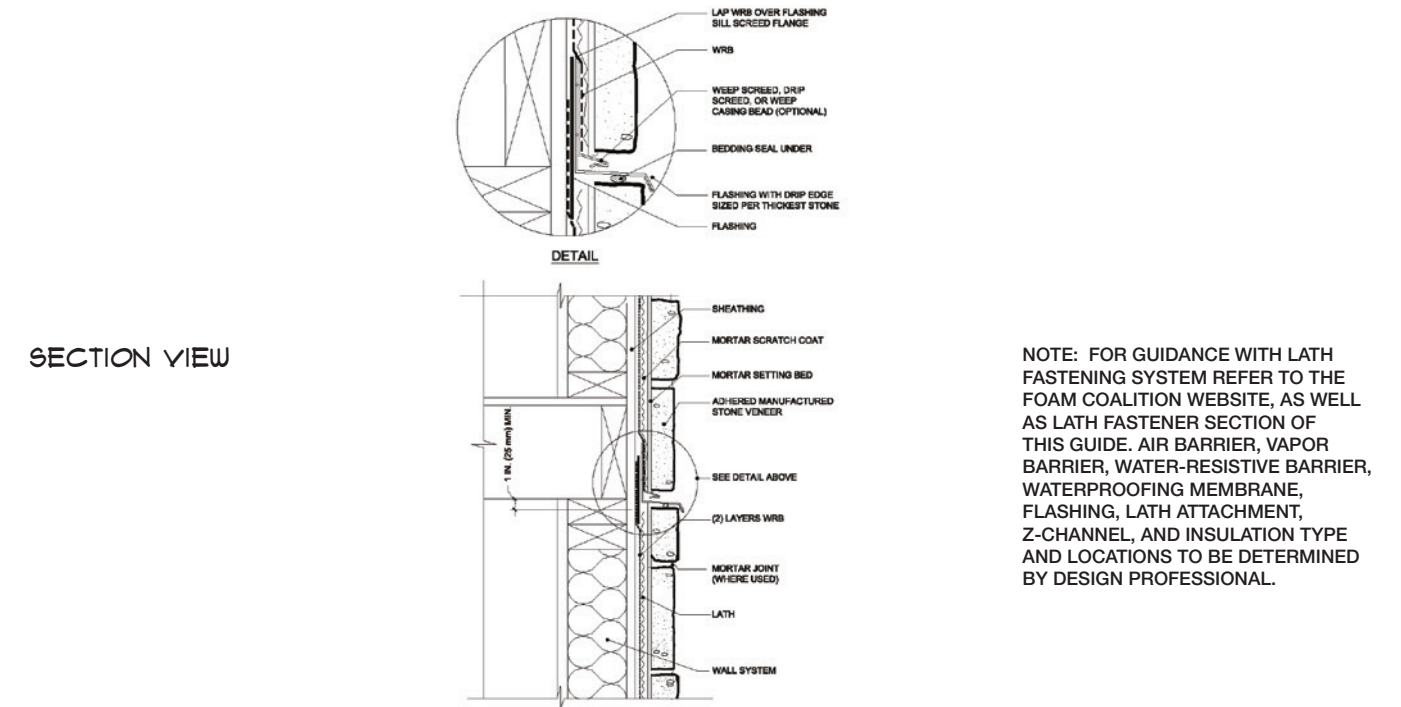


FIGURE 44. WALL-SECTION MULTI-FLOOR JOINT DETAIL



These construction details are provided to assist in the installation of Boral® Cultured Stone® product(s). These construction details will not necessarily apply to every design circumstance that you encounter. These construction details may, and most likely will, require modifications to meet your particular design requirements. Manufacturer accepts no responsibility or liability for the use of these or other construction details.

These construction details are provided to assist in the installation of Boral® Cultured Stone® product(s). These construction details will not necessarily apply to every design circumstance that you encounter. These construction details may, and most likely will, require modifications to meet your particular design requirements. Manufacturer accepts no responsibility or liability for the use of these or other construction details.

FIGURE 45. WALL-SECTION OVER RIGID INSULATION WITH ADDITIONAL SHEATHING

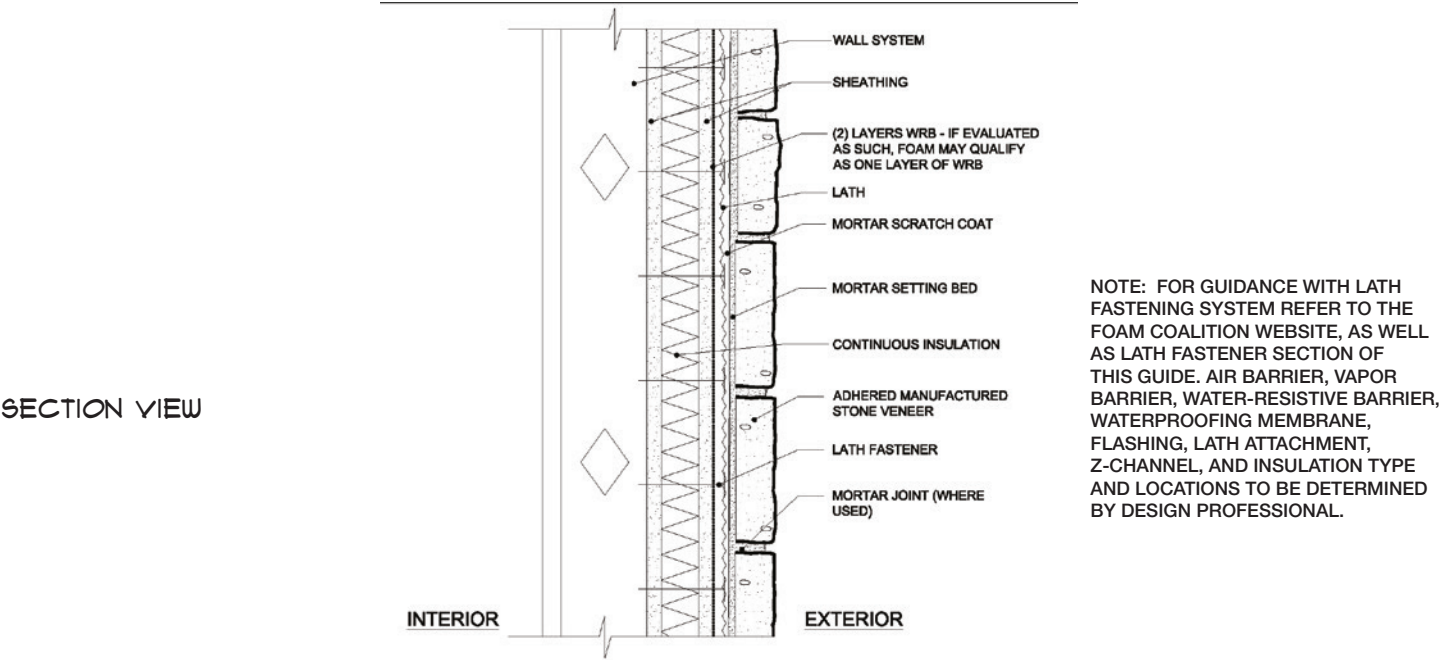


FIGURE 47. WALL-SECTION INSIDE CORNER WITH STUCCO-TOP VIEW

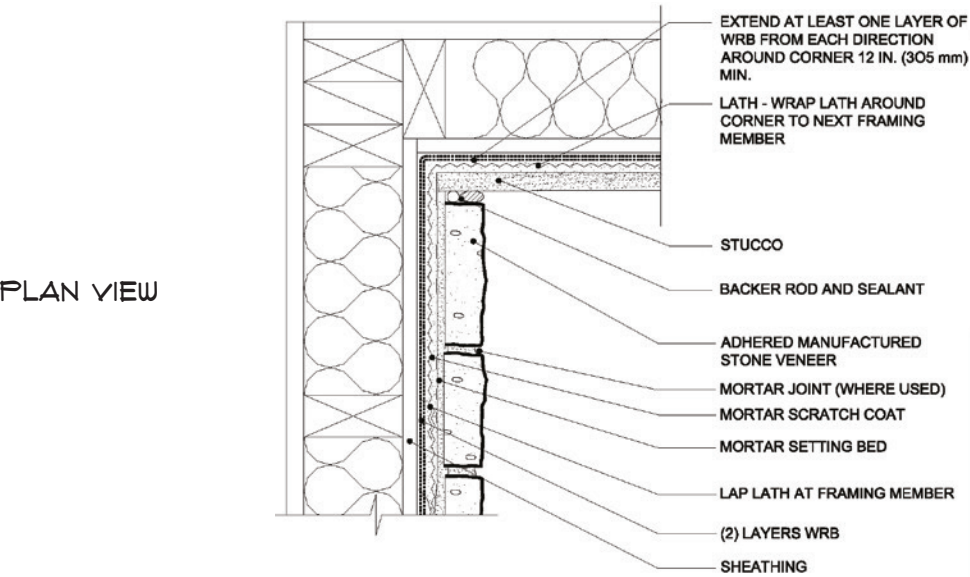


FIGURE 46. WALL-SECTION OVER CONTINUOUS RIGID INSULATION CMU

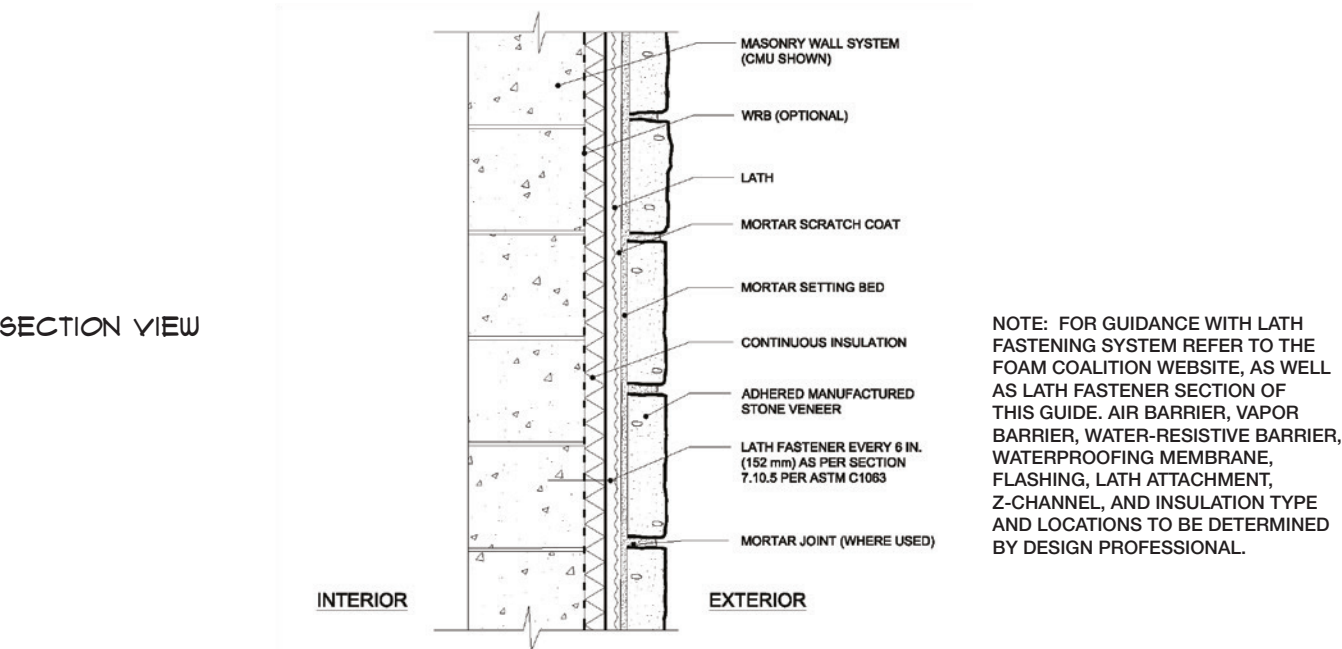
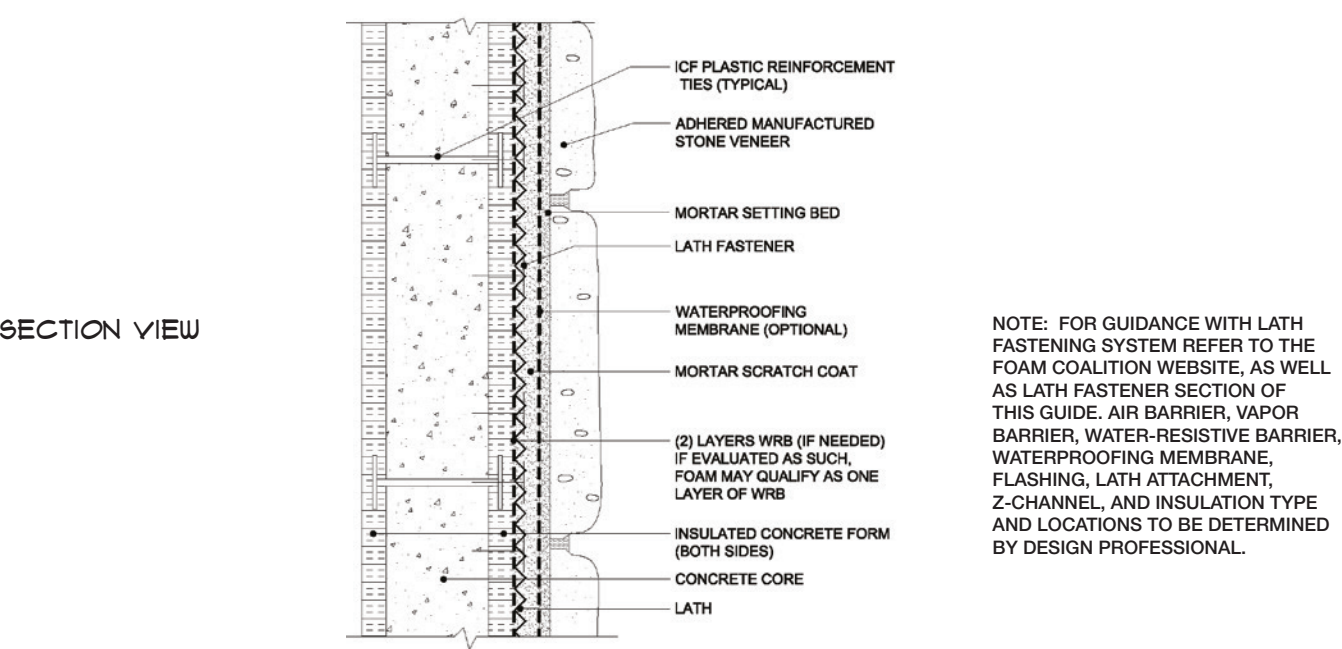


FIGURE 48. WALL-SECTION INSULATED CONCRETE FORM (ICF)-TOP VIEW

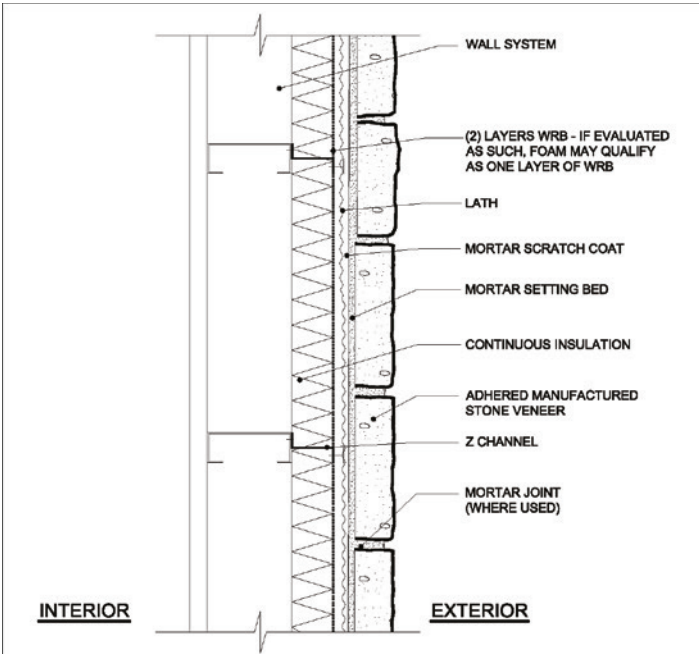


These construction details are provided to assist in the installation of Boral® Cultured Stone® product(s). These construction details will not necessarily apply to every design circumstance that you encounter. These construction details may, and most likely will, require modifications to meet your particular design requirements. Manufacturer accepts no responsibility or liability for the use of these or other construction details.

These construction details are provided to assist in the installation of Boral® Cultured Stone® product(s). These construction details will not necessarily apply to every design circumstance that you encounter. These construction details may, and most likely will, require modifications to meet your particular design requirements. Manufacturer accepts no responsibility or liability for the use of these or other construction details.

FIGURE 49. WALL-SECTION OVER CONTINUOUS RIGID INSULATION WITH Z CHANNELS-TOP VIEW

SECTION VIEW



NOTE: FOR GUIDANCE WITH LATH FASTENING SYSTEM REFER TO THE FOAM COALITION WEBSITE, AS WELL AS LATH FASTENER SECTION OF THIS GUIDE. AIR BARRIER, VAPOR BARRIER, WATER-RESISTIVE BARRIER, WATERPROOFING MEMBRANE, FLASHING, LATH ATTACHMENT, Z-CHANNEL, AND INSULATION TYPE AND LOCATIONS TO BE DETERMINED BY DESIGN PROFESSIONAL.

FIGURE 51. WALL-SECTION PARAPET WITH STONE CAP

SECTION VIEW

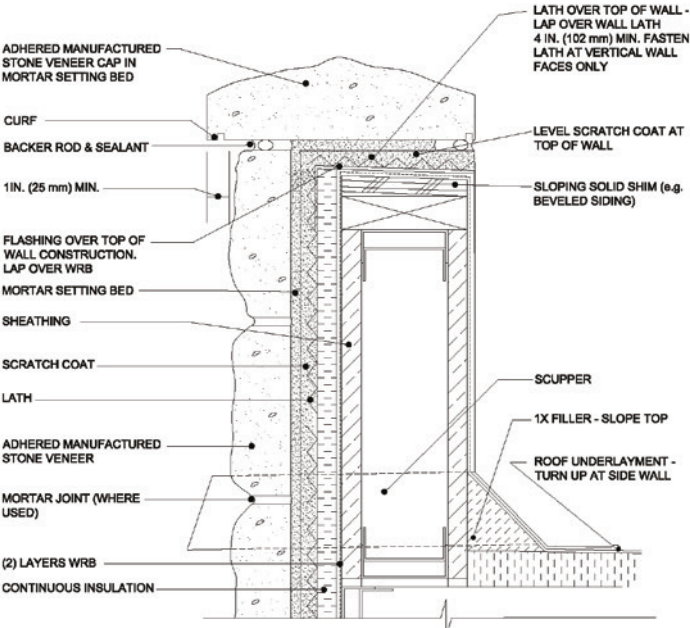
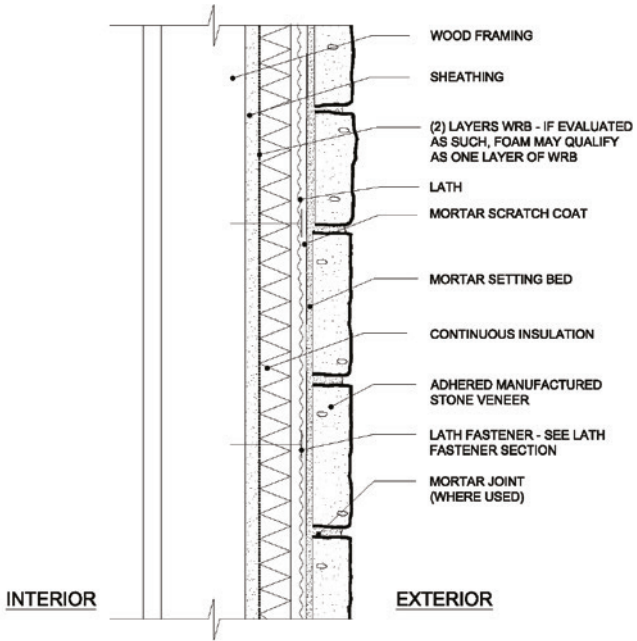


FIGURE 50. WALL-SECTION OVER CONTINUOUS RIGID INSULATION

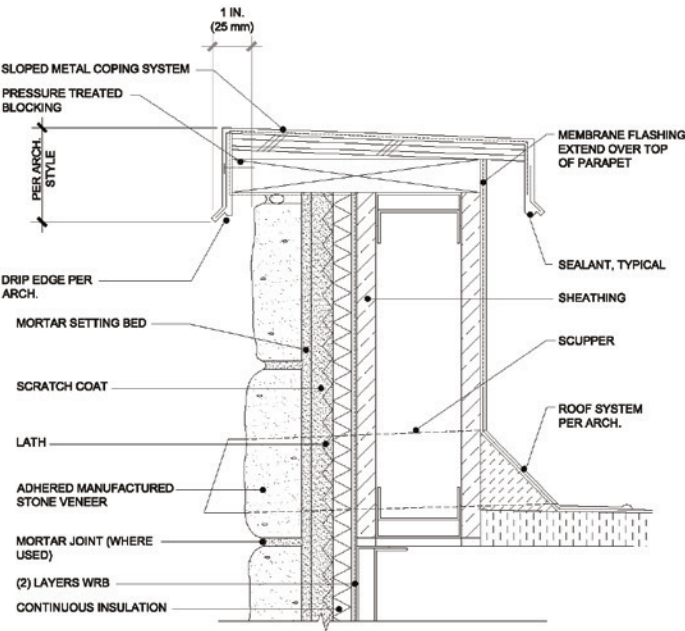
SECTION VIEW



NOTE: FOR GUIDANCE WITH LATH FASTENING SYSTEM REFER TO THE FOAM COALITION WEBSITE, AS WELL AS LATH FASTENER SECTION OF THIS GUIDE. AIR BARRIER, VAPOR BARRIER, WATER-RESISTIVE BARRIER, WATERPROOFING MEMBRANE, FLASHING, LATH ATTACHMENT, Z-CHANNEL, AND INSULATION TYPE AND LOCATIONS TO BE DETERMINED BY DESIGN PROFESSIONAL.

FIGURE 52. WALL-SECTION PARAPET WITH STEEL CAP

SECTION VIEW



These construction details are provided to assist in the installation of Boral® Cultured Stone® product(s). These construction details will not necessarily apply to every design circumstance that you encounter. These construction details may, and most likely will, require modifications to meet your particular design requirements. Manufacturer accepts no responsibility or liability for the use of these or other construction details.

These construction details are provided to assist in the installation of Boral® Cultured Stone® product(s). These construction details will not necessarily apply to every design circumstance that you encounter. These construction details may, and most likely will, require modifications to meet your particular design requirements. Manufacturer accepts no responsibility or liability for the use of these or other construction details.

This guide addresses generally accepted methods and details for the installation of Adhered Manufactured Stone Veneer. To the best of our knowledge, it is correct and up-to-date. However, the document is designed only as a guide; and it is not intended for any specific construction project. Canadian Stone Industries makes no express or implied warranty or guarantee of the techniques, construction methods or materials or materials identified herein.

It is understood that there are alternative means or methods that might be required and/or recommended based on project conditions, manufacturer's recommendations, or product characteristics.

This Guide for builders, architects, designers, masons, installers and other construction professionals illustrates typical applications of Adhered Manufactured Stone Veneer. Details in this guide that address the installation and detailing of Adhered Manufactured Stone Veneer and its interface with other building components are not intended as specific recommends. It is the responsibility of all design and construction professionals to determine the applicability and appropriate application and any detail to any specific project.

These construction details are provided to assist in the installation of Boral® Cultured Stone® product(s). These construction details will not necessarily apply to every design circumstance that you encounter. These construction details may, and most likely will, require modifications to meet your particular design requirements. Manufacturer accepts no responsibility or liability for the use of these or other construction details.



T: 1.800.977.8663 **F:** 1.800.788.6655
E: sales@canadianstone.com
W: www.canadianstone.ca