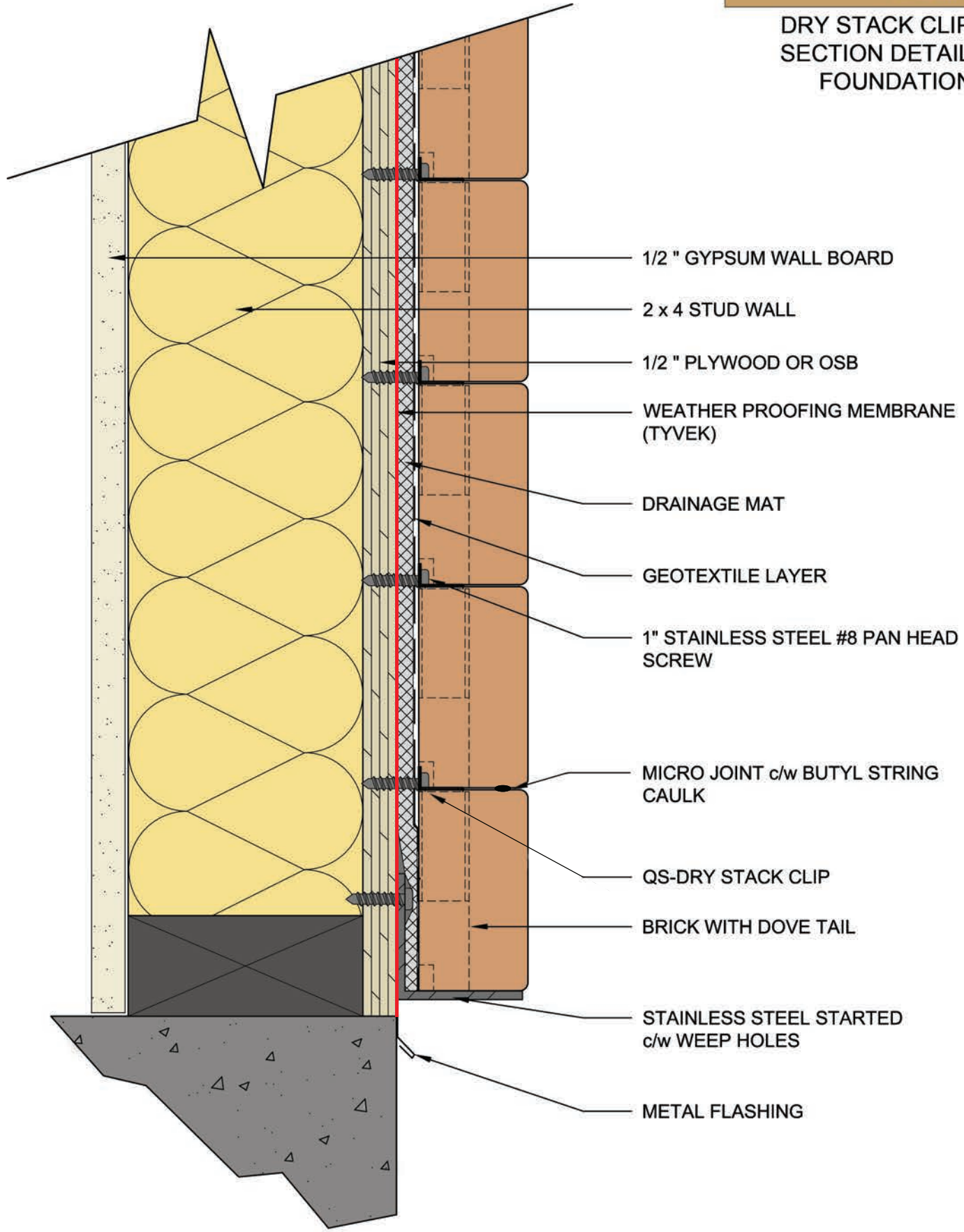




DRY STACK CLIP SECTION DETAIL FOUNDATION



- 1/2 " GYPSUM WALL BOARD
- 2 x 4 STUD WALL
- 1/2 " PLYWOOD OR OSB
- WEATHER PROOFING MEMBRANE (TYVEK)
- DRAINAGE MAT
- GEOTEXTILE LAYER
- 1" STAINLESS STEEL #8 PAN HEAD SCREW
- MICRO JOINT c/w BUTYL STRING CAULK
- QS-DRY STACK CLIP
- BRICK WITH DOVE TAIL
- STAINLESS STEEL STARTED c/w WEEP HOLES
- METAL FLASHING