



*We make
fire...
better.*

earthcore®

LUXURY
Hearth & Patio Products

BEHIND EVERY BEAUTIFUL FIREPLACE IS AN ISOKERN

FIRE: Like the open sea one becomes mesmerized, staring out at the horizon and hearing the waves break on shore. Fire, unlike the sea, is delivered to us in variety of forms. So golden is its presence, so priceless is its appeal, yet we have abandoned wood fires' essential gratitude of allowing us to survive and develop over the centuries. Fire created from wood is the only natural renewable energy available on our planet with minimal environmental impact.

Today, we watch as fire is delivered to us from a remote control, steel pipes and electronic ignition behind a glass wall. Perhaps not so mesmerizing as the open sea, are these flames that flicker but they don't dance as those do when delivered from the essence of wood.

At earthcore we embellish and safely contain fire within a natural resource that also continues to be reproduced, volcanic pumice stone. Our pumice is exclusive to us from Iceland, which allows us to produce fire resistant components in our state of the art facility in Virginia. The Isokern brand was created over 80 years ago to protect and reflect heat produced within its enclave, providing the most natural and safest way to enjoy fire. Isokern products respect the natural ability of wood fire for its beauty, production of heat and preparation of food.

For over 25 years, we continue to work diligently on quality control, design utilization and affordability. At earthcore we deliver the endearment of yesterday, the contemporary designs of today and are always evolving to meet demands of tomorrow with everlasting products of Isokern.



We ask you to take a moment and review our Sourcebook and utilize us to deliver the expectations you envision with knowing your fire is safe with Isokern. As always at earthcore we make fire....better

Carl R. Spadaro
Founder of Earthcore

CONTENT

ISOKERN Fireplaces

STANDARD Series	5
MAGNUM Series	7
MAXIMUS Series	9
BVETTO Series	11
VENT-FREE Series	13
Fire-Lite Application	17

Mechanical Venting 19

ISOKERN Chimney Solutions

DM54 Chimney System	20
EM40 Mono Chimney	20
Brick Ledge	20
Offset Block	20
ECO-STEEL / ECO-STEEL+	21

ISOFLAMES

Premium Vented Log Set	23
Vented & Vent-Free Log Sets	24

ISO'VEN

Wood Burning Pizza Oven	25
-------------------------	----

ISOPANEL

Modular Outdoor Kitchen System	26
--------------------------------	----

Fireplace & Chimney Accessories 27

Chimney Pots 29



LINEAR FIREPLACE SOLUTIONS

Much like the people who enjoy them, each fire has a look, personality and style all its own. At Earthcore, we believe fireplaces should be equally unique. Earthcore now offers a fully customizable Linear Burner System.

Remarkably versatile and flexible, this system allows for infinite design options, so the fireplace can truly reflect the mood of the room. A favorite in commercial projects, such as hotel lobbies, resorts, lodges and residential projects, you can choose from small and intimate looks to massive 22-foot long openings. Our team of professionals are ready to assist you in bringing your creative vision to life.



WHY CHOOSE ISOKERN

INSIGHT INTO OUR TECHNOLOGY

Extracted from Iceland's Mt. Hekla volcano, Isokern products are made from the cleanest, purest pumice. Our masonry components cradle the raw power of fire in the safest, most energy-efficient material on earth. Due to the material's properties, the components are lightweight, while retaining UL 127 for the Modular Masonry Fireplaces and UL 103HT for the Dual Module Chimney System (respectively) listings. Similar looking components made by others are concrete which do not have the refractive or insulative properties as our pumice. Totally customizable, Isokern allows architects and their clients to pursue their most inspired designs, while connecting with the natural beauty of fire in a way that, until now, only nature could.



MANUFACTURING

Our pumice ships directly from the source to the Earthcore manufacturing facility in Chesapeake, Virginia, where it's pressed into modular fireplace and chimney components. This process takes place in our efficient, automated, state-of-the-art facility and operates under strict quality-controlled guidelines, resulting in Earthcore's environmentally safe, incredibly efficient fireplaces, chimneys, outdoor kitchen panels, and wood burning ovens.



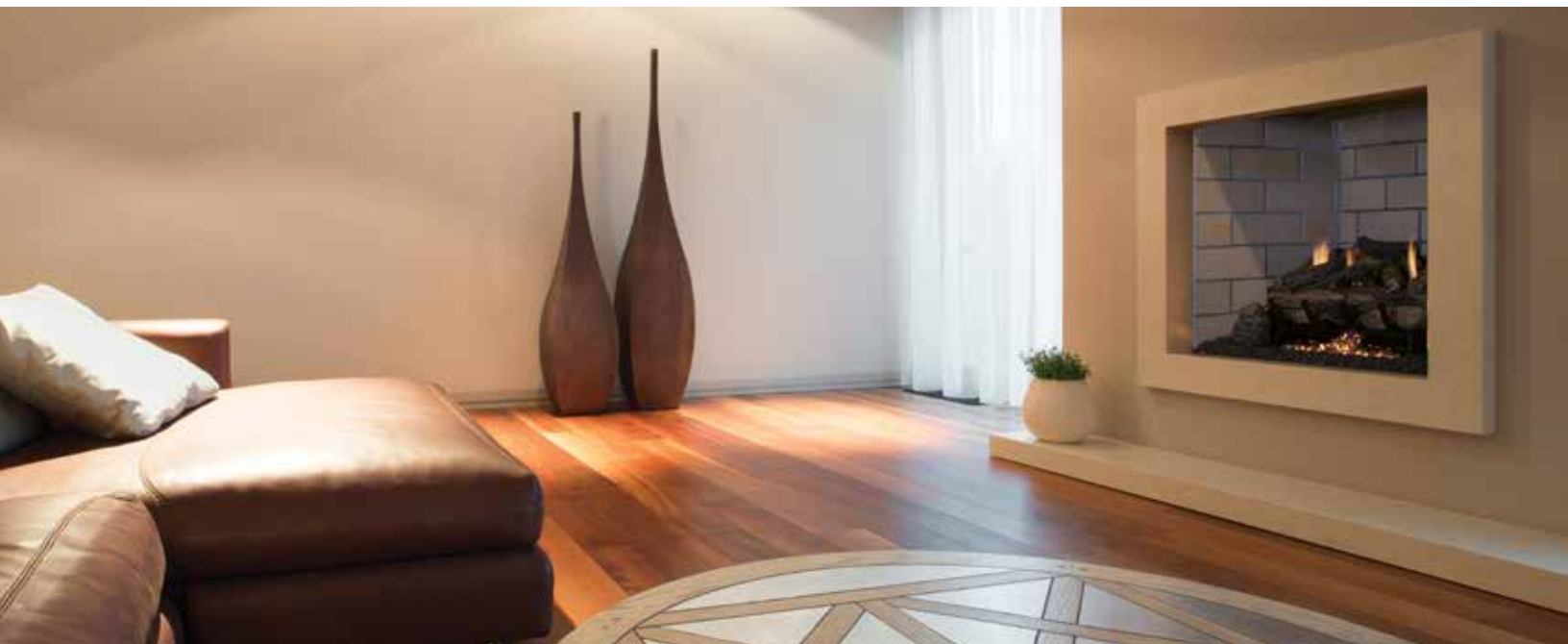


OUR COMMITMENT TO QUALITY

Through years of dedication, R&D, quality control and stringent testing, Earthcore's Isokern Fireplaces & Chimney Systems have turned up the heat on the hearth industry by making products that are easy to install, lightweight, safe, affordable and built to last. We guarantee each Isokern product with a Lifetime Warranty which protects against manufacturer defects, so you can expect countless years of joy as you celebrate the timeless pleasures of your beautiful fire with Isokern.

SETTING THE STANDARDS

Where most fireplace manufacturers stop, Earthcore is just getting warmed up. Utilizing the GreenTech Solution, all Isokern wood burning fireplaces are **EPA Phase II** qualified and are tested and listed to the highest standards in the United States and Canada. Another first, the Fire-Lite Application enables architects, builders and designers to specify a wood burning masonry fireplace system in projects that couldn't include one in the past. Using our Metal Stand in the Fire-Lite Application, both the Isokern Magnum and Standard Series can be placed directly on a combustible floor or be recessed into any combustible floor system as an approved, listed application with detailed plans available. See page 19-20 for more information.



earthcore®

ISO KERN

The Standard (All Fuel)

NO ONE EVER
CURLED UP NEXT
TO THE FLAT SCREEN TV
WITH A GOOD BOOK.





THE ISOKERN STANDARD SERIES (ALL FUEL)

Make your ideal dream home a dream come true with Isokern's Standard Series. As the first Isokern modular fireplace introduced in the United States, the modular construction of the Standard Series allows you to unleash your creative desires with a fireplace as unique as you are. Whether you choose wood burning for indoor or outdoor, the Standard Series sets the standard.

Applications

- Indoor
- Outdoor
- Wood
- Natural Gas
- LP (Liquid Propane)
- Combustible Floor Installation
- Custom Finish
- Multi-Sided Availability
- Isokern DM Chimney
- Eco-Steel Chimney



EPA - GREENTECH SOLUTIONS AVAILABLE
page 18



FIREBRICK COLOR & PATTERN OPTIONS
page 28

earthcore®

ISOKERN

The Magnum (All Fuel)

Applications

Indoor
Outdoor
Wood
Natural Gas
LP (Liquid Propane)
Combustible Floor Installation
for models up to 48"
Custom Finish
Multi-Sided Availability
Isokern DM Chimney
Eco-Steel Chimney

CRADLED IN STONE,
THE BEAUTY OF
FIRE TAKES US BACK
TO A TIME WHEN IT
DEFINED OUR LIVES.

THE ISOKERN MAGNUM SERIES (ALL FUEL)

Fan the flames of innovation and take your fireplace to new heights. The Isokern Magnum Series Fireplace System product line offers the largest openings available in the market, with finished width openings of 36", 42", 48", 60" & 72". Isokern's proprietary straight-back interior design and innovative contoured shelf, the modular Magnum Series produces unequalled efficiency, performance and custom fireplace design flexibility.



EPA - GREENTECH SOLUTIONS AVAILABLE
page 18



FIREBRICK COLOR & PATTERN OPTIONS
page 28





earthcore®

ISO KERN

The Maximus (Gas Only)

Applications

Indoor
Natural Gas
LP (Liquid Propane)
Combustible Floor
Installation
Custom Finish
Direct Vent Chimney

FIRST EVER MASONRY
DIRECT VENT FIREPLACE.





THE ISOKERN MAXIMUS SERIES (GAS ONLY)

Put the awe-inspiring power of fire on full display. The Isokern MAXIMUS Series is the first ever masonry direct vent fireplace. Offering an expansive ceramic glass opening with Invisi-Barrier and Triple Stadium Burner for exceptional appearance and flame presentation. With an array of options, the MAXIMUS provides endless possibilities for making your space warm and inviting.



FIREBRICK COLOR & PATTERN OPTIONS
page 28



ISOKERN

BVetto (Gas Only)

5,000 YEARS IN
THE MAKING.
CLEANER.
SUPERIOR IN
EVERY QUALITY.



THE ISOKERN BVETTO SERIES (GAS ONLY)

The warm embrace of fire has captivated human beings since the dawn of mankind. The only field-assembled, modular refractory, decorative gas appliance in the market today. The Isokern BVetto Series has the largest opening height of 52" before firebrick and can be installed directly onto combustible floor systems and meets ANSI Z21.50 standard guidelines. With our proprietary quick fire ignition system, the Isokern BVetto comes complete with our exclusive Isoflames Stadium Burner. The Isoflames log set has a convenient all Remote Electronic Ignition with an optional wall switch. Featuring three log set options: Sandhill Oak, Charred Hickory or Summit Pine.



FIREBRICK COLOR & PATTERN OPTIONS
page 28



MULTI-VENTING (MFES) OPTION AVAILABLE
page 19



Charred Hickory



Sandhill Oak



Summit Pine

Applications

Indoor
Natural Gas
LP (Liquid Propane)
Combustible Floor
Installation
Custom Finish
B-Vent Chimney

earthcore®

ISOKERN

The Vent-Free (Gas Only)

Applications

Indoor
Outdoor
Natural Gas
LP (Liquid Propane)
Combustible Floor
Installation
Custom Finish
2 Sided Availability
Unvented



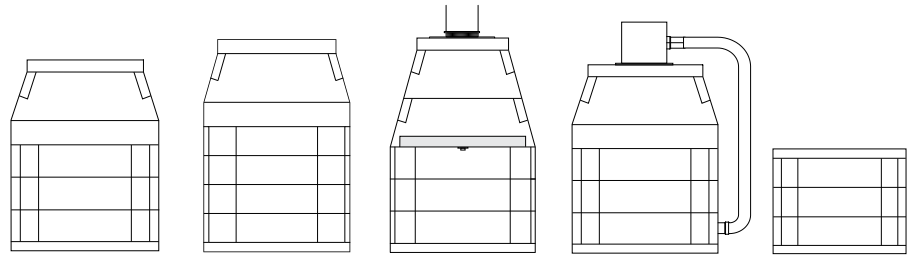
THE ISOKERN VENT-FREE SERIES (GAS ONLY)

Gas fire knows no bounds. Neither should your fireplace. The Vent-Free Series can be installed in less traditional areas of your house or even outdoors. With its large finished openings and double-sided/see-through availability, the Vent-Free Series is perfect in multi-family, new homes, a remodeling design or pool concept. And, unlike other masonry fireplaces, the Vent-Free Series fireplace can be installed in hours, is ideal for a variety of applications including indoor, or outdoor using our Stainless Steel Isoflames burner. See page 24 for log set options. This fireplace can also be finished in any way you desire— brick, stone, stucco, tile or veneer.



FIREBRICK COLOR & PATTERN OPTIONS
page 28

COMPARE ISOKERN MODULAR MASONRY FIREPLACES



	STANDARD	MAGNUM	BVETTO	MAXIMUS	VENT-FREE
APPLICATIONS					
Indoor	•	•	•	•	•
Outdoor	•	•			•
Multi-View	•	•			•
Commercial	•	•	•		•
Residential	•	•	•	•	•
Custom Finish	•	•	•	•	•
Masonry Foundation Installation	•	•	•	•	•
Combustible Floor Installation	36"/42"/46" with Fire-Lite* Option	36"/42"/48" with Fire-Lite* Option	•	•	•
GreenTech** (EPA Phase 2 Qualified)	Optional	Optional			
FUEL TYPES					
Wood Burning	•	•			
Natural Gas (NG)	•	•	•	•	•
Liquid Propane (LP)	•	•	•	•	•
VENTING †					
Flue Size	13" nominally	13" nominally	10"	8"	NA
Masonry Chimney	Isokern DM54	Isokern DM54			
Air Cooled Metal Chimney Pipe	UL103	UL103	10" B-Vent	SV8 Direct Vent	
Insulated Metal Chimney Pipe	UL103	UL103			
eDamper (Electronic Damper)			•		
HEARTH OPENING SIZES †					
28" Model		31" x 28 1/2"			
36" Model	36 1/8" x 31 1/2"	38 3/8" x 38"	36 1/8" x 31 1/2"		36 1/8" x 31 1/2"
42" Model	43 1/8" x 31 1/2"	44 1/2" x 38"			43 1/8" x 31 1/2"
46" Model	47 1/8" x 31 1/2"		47 1/8" x 31 1/2"	39 1/8" x 28 7/8"	47 1/8" x 31 1/2"
48" Model		48 1/2" x 38"		40 1/2" x 35 3/8"	
60" Model (Lintel Required)		69" x 38"			
72" Model (Lintel Required)		81 1/4" x 38"			

*The Fire-Lite application allows select Isokern wood burning fireplaces to be placed on a combustible floor when using the 4" Fire-Lite stand and Eco-steel Chimney.

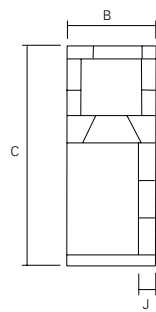
**The GreenTech application allows Isokern wood burning fireplaces to be EPA Phase 2 qualified and listed on the EPA Website under the Burn Wise Program.

† Consult manual regarding chimney size and clearances. Hearth opening size is the total viewing area (width x height) prior to firebrick installation.

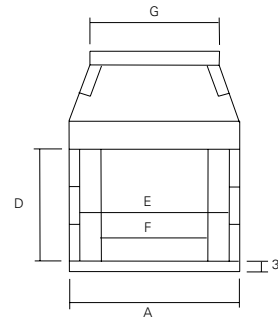
THE STANDARD SERIES

Page 5

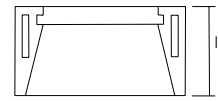
Assembled Firebox and
Smoke Dome Dimensions
36, 42, 46



Side View



Front View



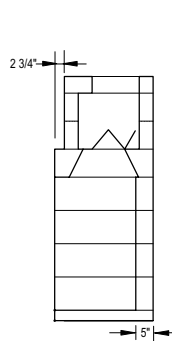
Plan View

Model	A	B	C	D	E	F	G	I	J	Minimum Framing**	Weight
36	43"	25 1/4"	63 1/4"	31 1/2"	36 1/8"	27 1/4"	33"	25 1/4"	5"	(46"w) x (65"h) x (26 3/4"d)	1205 lbs
42	49"	25 1/4"	63 1/4"	31 1/2"	43 1/8"	33 1/4"	33"	25 1/4"	5"	(52"w) x (65"h) x (26 3/4"d)	1325 lbs
46	53"	25 1/4"	63 1/4"	31 1/2"	47 1/8"	37 1/4"	43"	25 1/4"	5"	(56"w) x (65"h) x (26 3/4"d)	1450 lbs

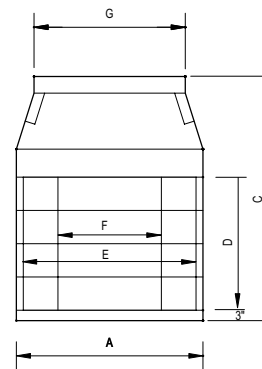
THE MAGNUM SERIES

Page 7

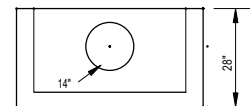
Assembled Firebox and
Smoke Dome Dimensions
36, 42, 48, 60 & 72



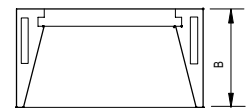
Side View



Front View



Top Plan View



Plan Selection A-A

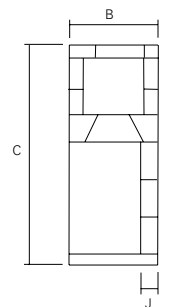
Model	A	B	C	D	E	F	G	Minimum Framing**	Weight
36	43"	28"	69 3/4"	38"	38 3/8"	27 1/4"	33"	(46"w) x (71"h) x (29 1/2"d)	1300 lbs
42	49"	28"	69 3/4"	38"	44 1/2"	33 1/4"	33"	(52"w) x (71"h) x (29 1/2"d)	1420 lbs
48	53"	28"	69 3/4"	38"	48 1/2"	37 1/4"	43"	(56"w) x (71"h) x (29 1/2"d)	1600 lbs
60	73 1/2"	28"	85 3/4"	38"	69"	57 1/4"	53 1/2"	(76 1/2"w) x (87 1/4"h) x (29 1/2"d)	2652 lbs
72	85 7/8"	28"	85 3/4"	38"	81 3/4"	69 3/4"	66"	(88 7/8"w) x (87 1/4"h) x (29 1/2"d)	2952 lbs

*Models 60 & 72 come with a double smoke dome and require a steel lintel(not included).

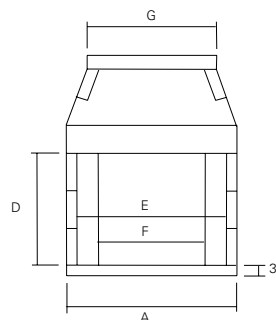
THE MAXIMUS SERIES

Page 9

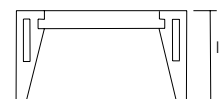
Assembled Firebox and
Smoke Dome Dimensions
46 & 48



Side View



Front View



Plan View

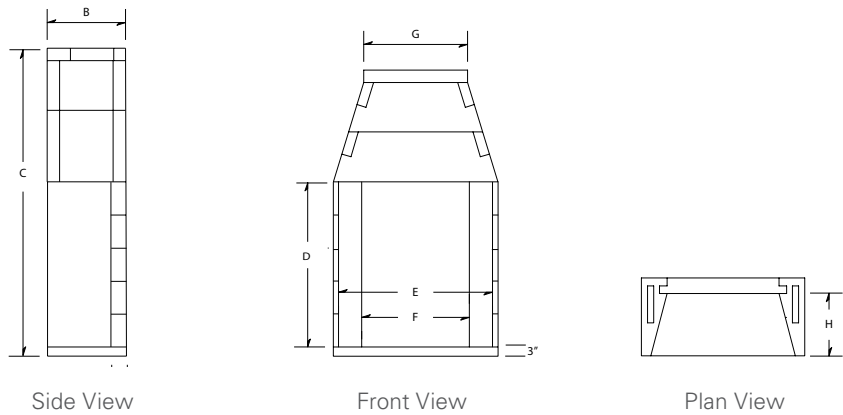
Model	A	B	C	D	E	F	G	I	J	Minimum Framing**	Weight
46	53"	25 1/4"	63 1/4"	31 1/2"	47 1/8"	37 1/4"	43"	25 1/4"	5"	(56"w) x (65"h) x (26 3/4"d)	1450 lbs
48	53"	25 1/4"	69 3/4"	38"	48 1/2"	37 1/4"	43"	28"	5"	(56"w) x (71"h) x (29 1/2"d)	1600 lbs

*Illustration is for Maximus 46 model

THE BVETTO SERIES

Page 11

Assembled Firebox and
Smoke Dome Dimensions 36, 46



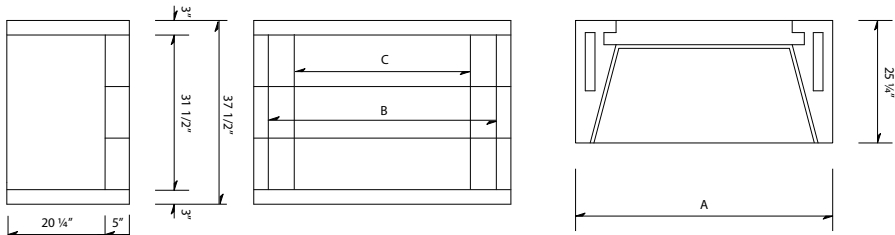
Model	A	B	C	D	E	F	G	H	I	Minimum Framing**	Weight
36	43"	25 1/4"	71 1/4"	31 1/2"	36 1/8"	27 1/4"	21 1/2"	20 1/4"	5"	(43"w) x (71 1/4"h) x (26 3/4"d)	1500 lbs
46	53"	25 1/4"	71 1/4"	*31 1/2"	47 1/8"	37 1/4"	32"	20 1/4"	5"	(53"w) x (71 1/4"h) x (26 3/4"d)	1700 lbs
*To achieve height dimension "d" in table above, a 100" (8.3') minimum flue height with 10" I.D. B-Vent is required											
36	43"	25 1/4"	81 3/4"	*42"	36 1/8"	27 1/4"	21 1/2"	20 1/4"	5"	(43"w) x (81 3/4"h) x (26 3/4"d)	1650 lbs
46	53"	25 1/4"	81 3/4"	*42"	47 1/8"	37 1/4"	32"	20 1/4"	5"	(53"w) x (81 3/4"h) x (26 3/4"d)	1850 lbs
*To achieve height dimension "d" in table above, a 9' minimum flue height with 10" I.D. B-Vent is required											
36	43"	25 1/4"	92 1/4"	*52 1/2"	36 1/8"	27 1/4"	21 1/2"	20 1/4"	5"	(43"w) x (92 1/4"h) x (26 3/4"d)	1800 lbs
46	53"	25 1/4"	92 1/4"	*52 1/2"	47 1/8"	37 1/4"	32"	20 1/4"	5"	(53"w) x (92 1/4"h) x (26 3/4"d)	2000 lbs

*To achieve height dimension "D" in table above, a 12' minimum flue height with 10" I.D. B-Vent is required

THE VENT-FREE SERIES

Page 13

Typical Vent-Free
Dimensions 36, 42, 46

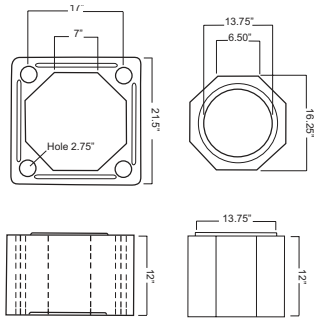


Model	A	B	C	Minimum Framing**	Weight
36	43"	36 1/8"	27 1/4"	(43"w) x (37 1/2"h) x (25 1/4"d)	715 lbs
42	49"	43 1/8"	33 1/4"	(49"w) x (37 1/2"h) x (25 1/4"d)	820 lbs
46	53"	47 1/8"	37 1/4"	(53"w) x (37 1/2"h) x (25 1/4"d)	880 lbs

DM54 CHIMNEY SYSTEMS

Page 20

Note: Eco-Steel Chimney Systems
and EM40 Mono Chimney
Appliance Chimney not shown.



**Minimum framing does not take into consideration customizations, hearth heights, or insulation clearances where applicable.



earthcore®

ISOKERN

Fire-Lite & GreenTech

FIRE-LITE FACTS

- Install on a combustible floor
- Requires ECO-STEEL or ECO-STEEL+ Chimney
- Fire-Lite stand is required and measures 4" in height
- Rated for both solid fuel and gas fireplaces
- Available in Standard 36", 42" & 46" as well as Magnum 36", 42" & 48"

GREENTECH FACTS

- EPA Phase II qualified
- Reduces emission particulates by 80%
- Rated for both solid fuel and gas fireplaces
- Available for all Standard and Magnum Fireplaces

Standard 46"
Fire-Lite Application
Custom Firebrick
Herringbone Pattern
Vented Gas Log Set

FIRE-LITE APPLICATION

Take the romantic charm of a wood burning fire into uncharted territory safely. The Fire-Lite Application represents the only modular masonry fireplace application listed and tested to be installed on a combustible floor system. Another first, this innovative (since 1998) application enables architects, builders and designers to specify a wood burning masonry fireplace system in projects that couldn't include one in the past.

Flush Hearth Application

Using the Metal Stand in the Fire-Lite Application, both the Isokern Magnum and Standard Series can be placed directly on a combustible floor or be recessed into any combustible floor system including hearth extension as an approved, listed application with detailed plans available. By knowing the dimensions of your finished floor material, the fireplace can be set to offer a desired, seamless flush hearth. Contact your local Isokern Representative for more information.



ECO-STEEL or
ECO-STEEL+
Chimney

ECO-STEEL or
ECO-STEEL+
Anchor Plate



FIRE-LITE Stand

ISOWOOL



EPA - GREENTECH SOLUTION

Enjoy the warmth of a wood burning fire while contributing to a cleaner environment. As the world's cleanest burning open-hearth masonry fireplace, the Isokern GreenTech Solution from Earthcore reduces particulate emissions by up to 80% and is the largest line of wood burning fireplaces to qualify under the EPA Phase II Voluntary Wood Burning Fireplace Program. The GreenTech Solution can be easily installed in a matter of minutes by adding this Earthcore Exclusive Catalytic Combustor to any Isokern Magnum or Standard Series fireplace.



ISOKERN / ECO-STEEL

Venting Solutions

ENERVEX MECHANICAL VENTING

The perfect fire features a flame that's just the right size. Not too high. Not too low. But to achieve the perfect fire, you need the perfect draft. That's why Isokern and Enervex, two leaders in the fireplace and venting industries, have teamed up to ensure proper chimney draft for air tight environments.

Fireplaces can be vented by gravity or by mechanical means. Gravity venting uses the difference in gravity of cold vs. warm air to create draft for fireplaces. Whereas mechanical venting uses a fan to create proper draft.

Utilizing an ENERVEX mechanical venting system is an economical and environmentally friendly solution that quietly maintains perfect draft for fireplaces. Each mechanical venting system will recommend ECO-STEEL or ECO-STEEL+ insulated chimney to provide the quiet comfort, so you'll never even notice it's there.




Also available by ENERVEX is the **Multi-story Fireplace Exhaust System (MFES)**. With this innovative technology, a single exhaust system can vent multiple gas-fired fireplaces in a single chimney. The fireplaces are monitored through an integrated electronic system allowing each unit to operate individually.

ENERVEX's systems qualify for LEED points under the Energy & Atmosphere, Materials & Resources, Indoor Environmental Quality and Innovation & Design Process sections.

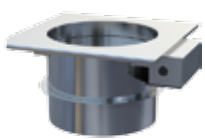
FOR GAS APPLICATION

RS CHIMNEY FAN




Made of high quality, recycled cast aluminum, the RS Chimney Fan keeps the perfect draft for gas appliances. The fan features a quiet, enclosed prelubricated motor. The FSC variable Fan Speed Control comes standard with the fan.

Mechanical Fireplace Damper




The low profile Mechanical Fireplace Damper (MFD) is an accessory to be used in conjunction with an ADC100 and RS Chimney Fan as part of the EcoDamper System or an ADC150 and RS Chimney Fan as part of the IntelliDraft System. This gasketed damper prevents conditioned air from escaping through the chimney when the fireplace is not in use and eliminates the need for glass doors.

ADC100/ADC150 CONTROL



The ADC100 and ADC150 Fan and Damper Controls, for gas fireplaces, feature a draft switch that shuts the appliance off when there is not enough draft, protecting your family from dangerous flue-gases. The ADC150 has the added feature that automatically maintains the perfect draft by modulating the fan speed when the pressure changes.


PDS1 PROVEN DRAFT SWITCH



Use the PDS1 Proven Draft Switch to provide protection from insufficient draft. When there is an unsafe draft, the switch shuts down the gas-fired appliance or fireplace.

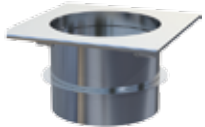
FOR SOLID-FUEL APPLICATION

RSHT CHIMNEY FAN




The RSHT Chimney Fan is a high temperature fan used to maintain the proper draft in a solid fuel chimney or stack system. It is intended for wood burning fireplaces. It boasts a 1000°F temperature rating. The FSC variable Fan Speed Control comes standard with the fan.

MANUAL FIREPLACE DAMPER



The MFD-S Fireplace Damper for solid fuel prevents conditioned air from escaping through the chimney when the fireplace is not in use, and prevents backdraft down the chimney. It includes an easy-open pull cable and handle that is mounted inside the fireplace.

FAN SPEED CONTROL



The FSC Fan Speed Control is used in conjunction with all single-phased chimney fans. It is specially engineered to provide variable speed control of split capacitor motors.

ISOKERN DUAL MODULE (DM54) CHIMNEY SYSTEM

Isokern manufactures a chimney system which is impervious to wear and tear. Our Dual Module (DM54) Chimney System has been venting homes and buildings near the Polar Circle for decades. Over the last quarter century, Isokern Chimney Systems vented over 155 million meters of chimney in North America. Component-based with an inner liner and outer casing, they are the only all masonry chimney system tested and listed to UL103HT (High Temperature) standards. The dual modular design allows for more diverse, lightweight, masonry-type installations and each component is built with tongue and groove construction with offset joints, enabling a tighter fit for maximum safety and consistent installation. In addition, the DM Chimney System with 100% zero-clearance to combustibles, makes it the easiest flue system to install.



Inner Liner



Outer Casing

EM40 MONO CHIMNEY

Our 16" Diameter EM40 Universal Flue is the largest insulating masonry chimney available. With proprietary "Air-Vent" technology, it will not crack like cheaper concrete alternatives. Used exclusively for outdoor applications. It has been tested and listed UL 103 and requires a 2" clearance to combustible materials.



CROWN CAPS

Prefabricated cementitious weather caps, our DM Crown Caps are designed for DM 54 Chimneys that will receive brick and stone veneers, as well as man-made stone installations. The caps feature an octagonal hole at the center allowing the top inner liner of the DM54 Chimney Stack to pass through. For dimensions varying from large to small, visit our website.



ISOKERN BRICK LEDGE

The Isokern Brick Ledge component is uniquely designed to allow a brick or stone chimney to exit out through the roof for interior fireplace installations. This component eliminates the cost of having excess masonry carried down to the footer, a major cost saver to the consumer.



ISOKERN OFFSET BLOCK

Isokern Offset Blocks offer the ability to move a vertical chimney from side to side, allowing it to pass objects above the firebox. Many current architectural specifications require a diverse chimney system to allow for more custom applications.



The lightweight Eco-Steel Venting Solution was created so each flue section connects securely using a locking-tab design — ensuring immediate, tight assembly. With a 12 5/8" inner diameter and 15 5/8" outer diameter, it is rated for any solid fuel Isokern fireplace. This versatile system has been tested and approved for use with Isokern Standard and Magnum fireplaces in typical or Fire-Lite applications. Insulated is recommended for all fan applications. Available in air-cooled (more economical) and insulated (more efficient) options.


**AIR-COOLED
CHIMNEY SECTION**

6" - 13ACECO6
12" - 13ACECO12
18" - 13ACECO18
36" - 13ACECO36
48" - 13ACECO48


**AIR-COOLED
ANCHOR PLATE**

13ACECOAP


**AIR-COOLED
ANCHOR PLATE
WITH DAMPER**

13ACECOAPD


**AIR-COOLED
15° OFFSET**

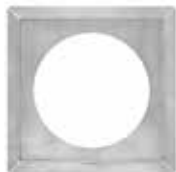
13ACECO15OS


**AIR-COOLED
30° OFFSET**

13ACECO30OS


STORM COLLAR

13ACECOSC


FIRESTOP

13ACECOFS


TALL CONE FLASHING

13ACECOFT


**INSULATED
CHIMNEY SECTION-
STAINLESS STEEL**

6" - 13INECO6
12" - 13INECO12
18" - 13INECO18
36" - 13INECO36
48" - 13INECO48


**INSULATED
ANCHOR PLATE-
STAINLESS STEEL**

13INECOAP


**INSULATED
ANCHOR PLATE
WITH DAMPER -
STAINLESS STEEL**

13INECOAPD


**INSULATED
15° OFFSET -
STAINLESS STEEL**

13INECO15OS


**INSULATED
30° OFFSET -
STAINLESS STEEL**

13INECO30OS


WALL BAND

13ACECOWB


**ATTIC INSULATION
SHIELD**

13ACECOIS


CHASE FLASHING

13ACECOFC

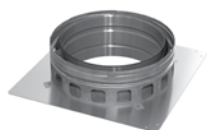
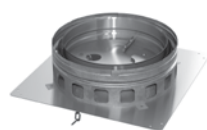

**CHIMNEY CAP -
STAINLESS STEEL**

13ACECOCC

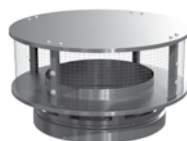
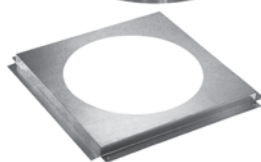
The lightweight Eco-Steel+ Venting Solution was created so each air-cooled flue section connects securely using a unique twist-lock design or each insulated flue section is screwed together — ensuring intermediate, secure assembly. With a 13" inner diameter and 16" outer diameter, it is rated for any solid fuel Isokern fireplace. This versatile system has been tested and approved for use with Isokern Standard and Magnum fireplaces in typical or Fire-Lite applications. Insulated is recommended for all fan applications. Available in air-cooled (more economical) and insulated (more efficient) options.


**AIR-COOLED
CHIMNEY SECTION**

6" - ECOP13AC-06
12" - ECOP13AC-12
18" - ECOP13AC-18
36" - ECOP13AC-36


**AIR-COOLED
ANCHOR PLATE**
ECOP13AC-KAP

**AIR-COOLED
ANCHOR PLATE
WITH DAMPER**
ECOP13AC-KAPD

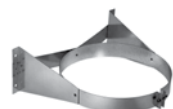
**AIR-COOLED
15° OFFSET**
ECOP13AC-E15

**AIR-COOLED
30° OFFSET**
ECOP13AC-E30

**AIR-COOLED
CHIMNEY CAP**
ECOP13AC-VC

FIRESTOP
ECOP13-FS

30° FIRESTOP
ECOP13-FS30

STORM COLLAR
ECOP13-SC

**CHASE TOP
COLLAR**
ECOP13-CTC

**CHASE TOP
FLASHING**
ECOP13-CTF

WALL BAND
ECOP13-WS
ECOP13WS-SS

**ATTIC INSULATION
SHIELD**
ECOP13-IS

**SUPPLEMENTARY
SUPPORT**
ECOP13-SS

STABILIZER
ECOP13-ST

ELBOW STRAP
ECOP13IN-ES

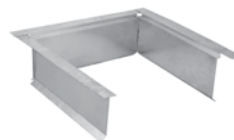
**INSULATED
CHIMNEY SECTION**
6" - ECOP13IN-06
6" - ECOP13IN-06SS*
12" - ECOP13IN-12
12" - ECOP13IN-12SS*
18" - ECOP13IN-18
18" - ECOP13IN-18SS*
36" - ECOP13IN-36
36" - ECOP13IN-36SS*

**INSULATED
ANCHOR PLATE**
ECOP13IN-KAP

**INSULATED
ANCHOR PLATE
WITH DAMPER**
ECOP13IN-KAPD

**INSULATED
15° OFFSET**
ECOP13IN-E15K
ECOP13IN-E15KSS*

**INSULATED
30° OFFSET**
ECOP13IN-E30K
ECOP13IN-E30KSS*

**INSULATED
CHIMNEY CAP**
ECOP13IN-VC

**ROOF RADIATION
SHIELD (14"/16")**
ECOP13-ST

**EUROPEAN COPPER
KING ADAPTER**
ECOP13-ECK

**EUROPEAN COPPER
BISHOP ADAPTER**
ECOP13-ECB

*Stainless Steel



ISOFLAMES

Vented & Vent-Free Log Sets



ISOFLAMES PREMIUM LOG SET

Our *Giant Sequoia* Premium Vented Log Set comes with a three tiered burner that highlights the beautiful detailing on each log and gives you a large all encompassing flame. The 1" tines on the burner are a perfect compliment to the 12" diameter of the Giant Sequoia front log. Included with each log set is the remote control with electronic ignition that gives you precision control. Featuring either an Indoor (Black) or Outdoor (Stainless) burner of your choice. **Custom log set sizes available up to 120", please contact your local Isokern Representative for more information.**

Standard Sizes include:
24", 30", 36", 48" & 60"



Giant Sequoia



Charred Hickory



Summit Pine



Sandhill Oak



ISOFLAMES VENTED LOG SETS

The Isoflames three tiered burner system creates high and full bodied flames... while using fewer BTU's than other vented burner systems. Included with each log set is the hi/low flame height remote control with electronic ignition that gives you precision control. Featuring either an Indoor (Black) or Outdoor (Stainless) burner with three log set options: *Sandhill Oak*, *Charred Hickory* or *Summit Pine*.

Available Sizes include: 24" & 30"

ISOFLAMES VENT-FREE LOG SETS

Lively flames and a large ember bed highlight the handcrafted logs, adding efficient heat and unmatched beauty to your fireplace. Included with each log set is the variable flame height remote control with electronic ignition that gives you precision control. Featuring either an Indoor (Black) or Outdoor (Stainless) burner with two log set options: *Twilight Split* or *Aged River Pine*.

Available Sizes include: 24" & 30"



Twilight Split (Outdoor)



Aged River Pine

ISO'VEN

WOOD BURNING PIZZA OVEN

Fresh mozzarella. Ripe, red tomatoes. Extra virgin olive oil. There are many ingredients that go into making the perfect pizza. But for that authentic, Neapolitan-style crust, there is nothing better than a real wood burning oven. Introducing the Earthcore Iso'ven Wood Burning Oven, the user-friendly, remarkably affordable outdoor wood burning pizza oven made from our exclusive volcanic material. Created for easy installation, the quick-fire Iso'ven heats up to **800 degrees in an hour**. The Iso'ven Wood Burning Pizza Oven comes with everything you need to get started, including an accessory package of helpful cooking tools.

Includes:

Proprietary Oven Liner
Refractory Mortar
Cooking Surface
Thermometer
Starter Fire Kit

Optional:

Gas Fired Assist
Baking Utensils

Perfect For:

12" Pizza, Bread, Wings and more.



OPTIONAL HOOD

Following the classic approach of traditional wood burning ovens, the Iso'ven is designed to vent through the front. But at Earthcore, we believe customization creates satisfaction. So, if you prefer a flue, we now offer a Hood for Iso'ven designs, giving you the freedom to finish it in your own personal style.



TABLE TOP OVEN WITH OPTIONAL STORAGE BASE

Fires strengthen the bonds between friends and family. Recognizing this, Earthcore developed the ideal companion for your Iso'ven Wood Burning Pizza Oven — our Table Top Oven with Optional Storage Base. Adding a new dimension to backyard dining, it allows you to choose the height of your Iso'ven in relation to the rest of your outdoor kitchen or living space. Installed as-is, with no customization, our Iso'ven base is the perfect height to pair with one of our Isokern outdoor fireplaces.

Visit the Iso'ven Gallery at earthcore.co for design ideas and to see photos of creative ways that others have used their Optional Storage Base.

Optional Storage:

Ample room for wood, pizza peels, aprons, cooking tools and more.



ACCESSORY KIT

Experience the simple joys of fire in the easiest way imaginable. Enhance your cooking pleasure with the Iso'ven Accessory Kit, which includes a wide array of tools specifically for cooking with your Iso'ven Wood Burning Pizza Oven.

Includes:

Utility Tongs
(2) 12" Pizza Screens
26" Pizza Peel
Stainless Steel Mixing Paddle



ISOPANEL MODULAR KITCHENS

Earthcore has streamlined the construction of building the classic culinary outdoor kitchen for quick assembly. Using our Isokern Panels and Clips, building a beautiful, durable and practical outdoor kitchen is easier than ever. The Isopanel will also support the Iso'ven for added options to construction.



COMPONENTS

ISOKERN PANELS

Dimensions per panel:
2'w x 34"h x 3"d

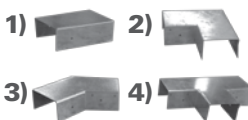
Use: Each panel weighs only 100 lbs, so they're easily moved when assembling your new outdoor kitchen components.



CLIPS

Use: Slide the appropriate clip over the junction of 2 adjacent panels for holding them together while the mortar is applied.

1) Straight 2) 90° 3) 45° 4) "T" clip



FIREPLACE & CHIMNEY ACCESSORIES



CAST IRON DAMPER

This Cast Iron damper is designed to sit in the throat of the Isokern fireplace and can be opened and closed with the poker control.
Sizes Available: 33", 42", 60" & 72"



SEALED CAST IRON DAMPER

Our NEW Sealed Cast Iron dampers substantially prevent air from escaping the chimney while also preventing outside air from entering the home. This damper utilizes a high temp fiberglass gasket to form a tight seal, offering energy efficiency for masonry fireplaces without the use of glass doors or chimney top dampers. Sizes Available: 33" & 42"



BOTTOM MOUNT DAMPER

The Bottom Mount Damper is a proprietary design to be used when a conventional poker or top-mount damper is not feasible. Great with **see-through** applications, this type of damper can be paired with either the DM54 or Steel Chimney Systems.



XB Sizes Available:
24", 30", 36", 50", 62"



HL Sizes Available:
23", 27"

CAST IRON GRATES

Stop struggling with fireplace grates that don't hold logs in the right location in your fireplace and have poor ventilation. With these Cast Iron Fireplace Grates in your fireplace, those concerns will be a thing of the past!



OUTSIDE AIR KIT

Also known as a Fresh Air Intake device, our Outside Air Kits are available with 4", 5" or 6" diameters. These kits help prevent back draft smoking caused by negative pressure in the home while drawing fresh air from the outside to fuel your wood burning fireplace. Outside Air Kits assist your fireplace in burning more evenly. Meeting most building code requirements, they also dramatically reduce pollution and smoke byproducts from your fire.



ISO-CAP

Specifically designed by Earthcore for the Isokern DM54 flue liner, Iso-Cap installation is minimal. Sealed with silicone caulk, each Iso-Cap simply slides into or over the inner flue liner of the DM54 Chimney.

Available in: Copper, Black Galvanized or Stainless Steel



EM-40 MONO FLUE CAP

Specifically designed for the Isokern 16" EM-40 Mono Flue, this Stainless Cap is used in outdoor only applications and installation is minimal. Sealed with silicone caulk, this cap slides on top of the EM-40 Mono Flue.



FIREPLACE & CHIMNEY ACCESSORIES

EARTHCORE FIREBOX ADHESIVE

The Earthcore Adhesive, is a thin-set masonry adhesive, which can be used in either interior or exterior installation. An approved adhesive for Isokern fireplace and chimney systems, the mortar is available in 50 pound pails. Properly mortared fireboxes and smoke dome assemblies require approximately five gallons (dry measure) of Earthcore Adhesive.



ISOSET FIREBRICK MORTAR

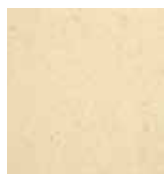
The IsoSet Brick Mortar, a thin-set masonry adhesive, can be used in either interiors or exteriors for laying of firebrick. It is the specified firebrick mortar to be used in all Isokern Fireplaces. The IsoSet is available in 50lb buckets, approximately 50 lbs of prepared mortar will lay up one hundred and fifty 9 x 4½ x 2½" Straights.



FIREBRICK

Our firebrick is a refractory brick made of fire clay or siliceous material that is rated at 1700°, capable of sustaining intense heat without fusion. Since it's not prone to expansion or contraction, this material helps minimize cracking under extreme heating conditions. **Coloration and size varies slightly, please contact your local Isokern Representative for more information.**

Whitacre Greer Firebrick



cream



red

Mariana Firebrick*



soapstone

Mutual Firebrick



tan



grey



red

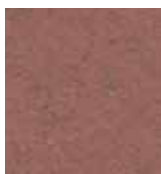
Muddox Firebrick



gold



tan



red



black



Standard Firebrick sizes:

Fulls: 9" x 4 1/2" x 2 1/2"

Splits: 9" x 4 1/2" x 1 1/4"

Soaps: 9" x 2" x 1 1/4"

Common Patterns:



herringbone



stack bond



basket weave



running bond

*Special Order

DECORATIVE CLAY POTS

Exclusively from Earthcore and made from the finest clay, Decorative Clay chimney pots not only enhance your home's exterior, but help in draft efficiency, improving the burn of your fireplace and air quality for the home. Made from high quality clay to maximize the strength and density of each pot produced, our Decorative Clay Pot collection offers various sizes and styles that are both practical and functional.



MANCHESTER
PROD# KUNI

Weight 150lbs
Height 36"
B. Inside Diameter 14"



PORTSMOUTH
PROD# GBUNI

Weight 130lbs
Height 30.5"
B. Inside Diameter 16"



NEWCASTLE
PROD# FCUNI

Weight 130lbs
Height 38"
B. Inside Diameter 17.5"



DORCHESTER
PROD# AUNI

Weight 150lbs
Height 26.5"
B. Inside Diameter 21"



ROXBURY
PROD#

	FTUNI	FUNI	FSTUNI
Weight	160lbs	110lbs	60lbs
Height	37"	25"	18"
B. Inside Diameter	17.5"	17.5"	13.5"

DECORATIVE CLAY CAPS



ROUND
PROD# JLUNI



OCTAGONAL
PROD# JSUNI

DECORATIVE STEEL POTS

Our Decorative Steel Pots have all the appeal of our popular traditional clay pots, at a fraction of the weight and cost. Earthcore's decorative steel pots are fashioned from 24" gauge, colored, Kynar steel. They are available in five standard colors and offer a 20-year warranty. Additional color options available for an additional charge.



PORTSMOUTH
PROD#OCT1930-TC

Weight 37lbs
Height 36"
B. Inside Diameter 21"



DORCHESTER
PROD#SQ-2326-TC

Weight 46lbs
Height 32"
B. Inside Diameter 21"



GLASGOW
PROD#ROU3026-TC

Weight 46lbs
Height 32"
B. Inside Diameter 28"



ONTARIO
PROD#SQOCT-1932-TC

Weight 37lbs
Height 38"
B. Inside Diameter 21"

Copper Ultramet

Terracotta

Weathered Copper

Muskett

Black



EUROPEAN COPPER CHIMNEY POTS

The patented, European Copper Chimney Pots meet the highest technical standards through it's UL-Listing and compliance with International Building Codes. They provide the finishing touch a fine chimney deserves. Viewed from the ground level, a chimney pot can appear too small if not sized properly. For the best aesthetic results, we recommend selecting a chimney pot that is approximately 15 percent of the overall chimney height. The European Copper chimney pots are unique in that they are compatible with both masonry and metal flue, giving you more options and a consistent quality look.



KING

COPPER: EC-O-2447-1-CO
GRAY: EC-O-2447-1-GR

Weight	36 lbs
Height	48"
Base	24"



QUEEN

COPPER: EC-O-2039-1-CO
GRAY: EC-O-2039-1-GR

Weight	26 lbs
Height	41"
Base	20"



BISHOP I

COPPER: EC-R-2649-1-CO
GRAY: EC-R-2649-1-GR

Weight	47 lbs
Height	52"
Base	26"



BISHOP II

COPPER: EC-R-2036-1-CO
GRAY: EC-R-2036-1-GR

Weight	36 lbs
Height	39"
Base	20"



KNIGHT I

COPPER: EC-SQ-2144-1-CO
GRAY: EC-SQ-2144-1-GR

Weight	36 lbs
Height	44"
Base	21"



KNIGHT II

COPPER: EC-SQ-1633-1-CO
GRAY: EC-SQ-1633-1-GR

Weight	20 lbs
Height	38"
Base	16"



PAWN

COPPER: EC-O-1924-1-CO
GRAY: EC-O-1924-1-GR

Weight	17 lbs
Height	25"
Base	20"



JACKSONVILLE, FL
Corporate / Branch Office

6899 Phillips Industrial Blvd.
Jacksonville, FL 32256
p. 904.363.3417 f. 904.363.3408

CHESAPEAKE, VA
Manufacturing / Distribution

4000 Holland Blvd.
Chesapeake, VA 23323
p. 757.966.7275

CORONA, CA
Warehouse / Distribution

165 Business Ctr Dr. # 101
Corona, CA 92880
p. 951.738.9702 f. 951.738.9010

Branch Locations

ATLANTA, GA
808 Curie Dr.
Alpharetta, GA 30005
p. 678.566.6602
f. 678.566.6613

CHARLOTTE, NC
525 Enterprise Drive
Charlotte, NC 28205
p. 704.370.3590
f. 704.370.3593

AUSTIN, TX
2101 E. St. Elmo Road
Suite #345
Austin, TX 75229
p. 512.443.4400
f. 512.443.4410

DALLAS, TX
2128 Crown Road
Dallas, TX 75229
p. 972.247.2311
f. 972.247.1099

HOUSTON, TX
4125 Southerland Road
Houston, TX 77092
p. 713.895.7595
f. 713.895.7747

PHOENIX, AZ
7910 N. Glen Harbor Blvd.
Glendale, AZ 85307
p. 602.454.0900
f. 602.454.6469

CAMARILLO, CA
460 Calle San Pablo #D
Camarillo, CA 93012
p. 805.484.7350
f. 805.484.7360