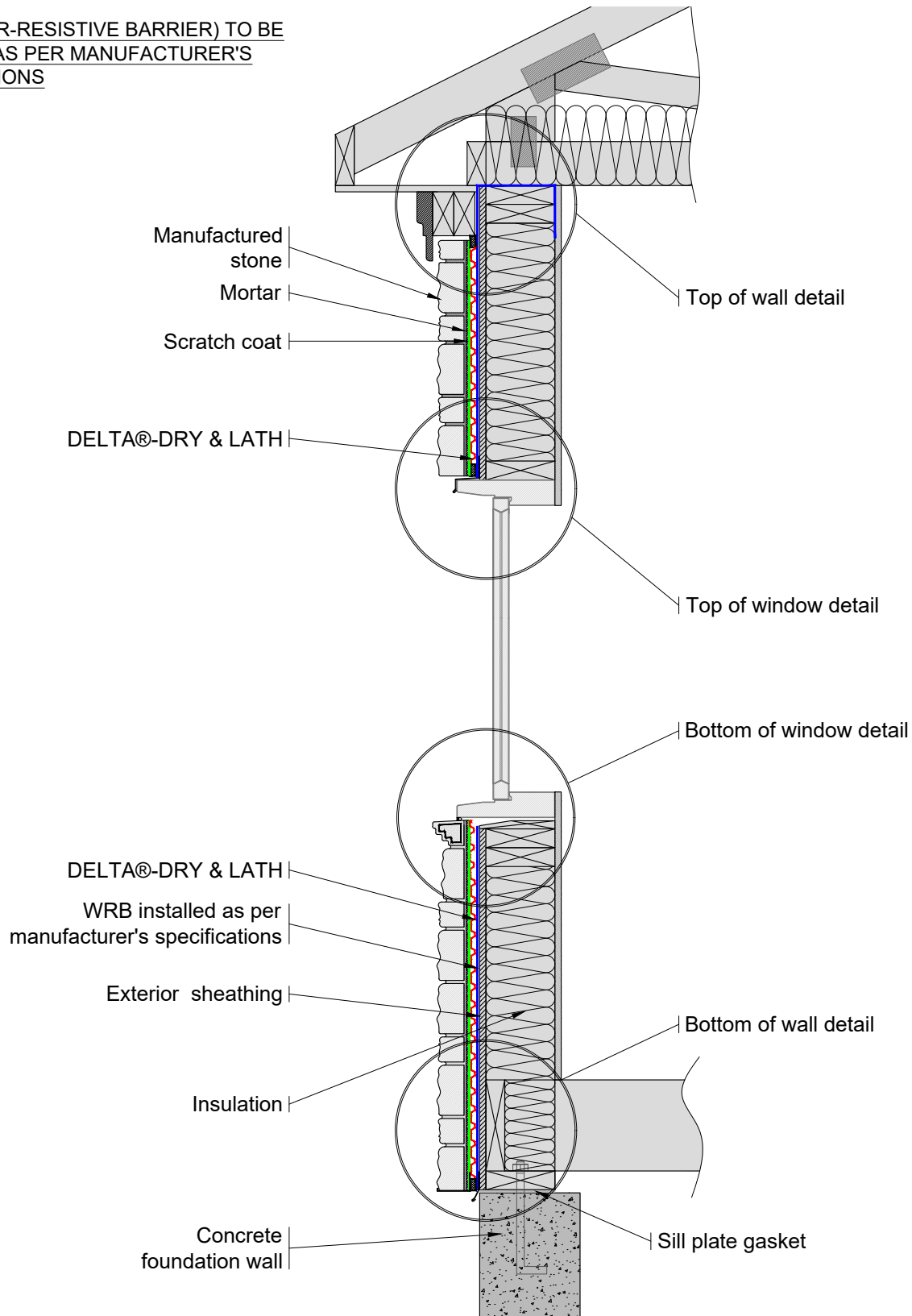


NOTE:

WRB (WATER-RESISTIVE BARRIER) TO BE
INSTALLED AS PER MANUFACTURER'S
SPECIFICATIONS



****For proper performance of DELTA®-DRY & LATH ensure top and bottom remain open to allow ventilation and drainage****

SUBSTANTIAL EFFORT HAS BEEN MADE TO ENSURE THAT THE INFORMATION IN THIS DETAIL DRAWING IS ACCURATE. DÖRKEN SYSTEMS INC. CANNOT ACCEPT RESPONSIBILITY FOR ANY ERRORS OR OVERSIGHTS IN THE USE OF THIS MATERIAL OR IN THE PREPARATION OF ARCHITECTURAL OR ENGINEERING PLANS. THE DESIGN PROFESSIONAL MUST RECOGNIZE THAT NO DESIGN DETAIL CAN SUBSTITUTE FOR EXPERIENCED ENGINEERING AND PROFESSIONAL JUDGEMENT.

TITLE:

**DELTA®-DRY & LATH RAINSCREEN
APPLICATION WITH
MANUFACTURED STONE**

DRAWN BY: Krzysztof Apiasz C. Tech., CPHC®

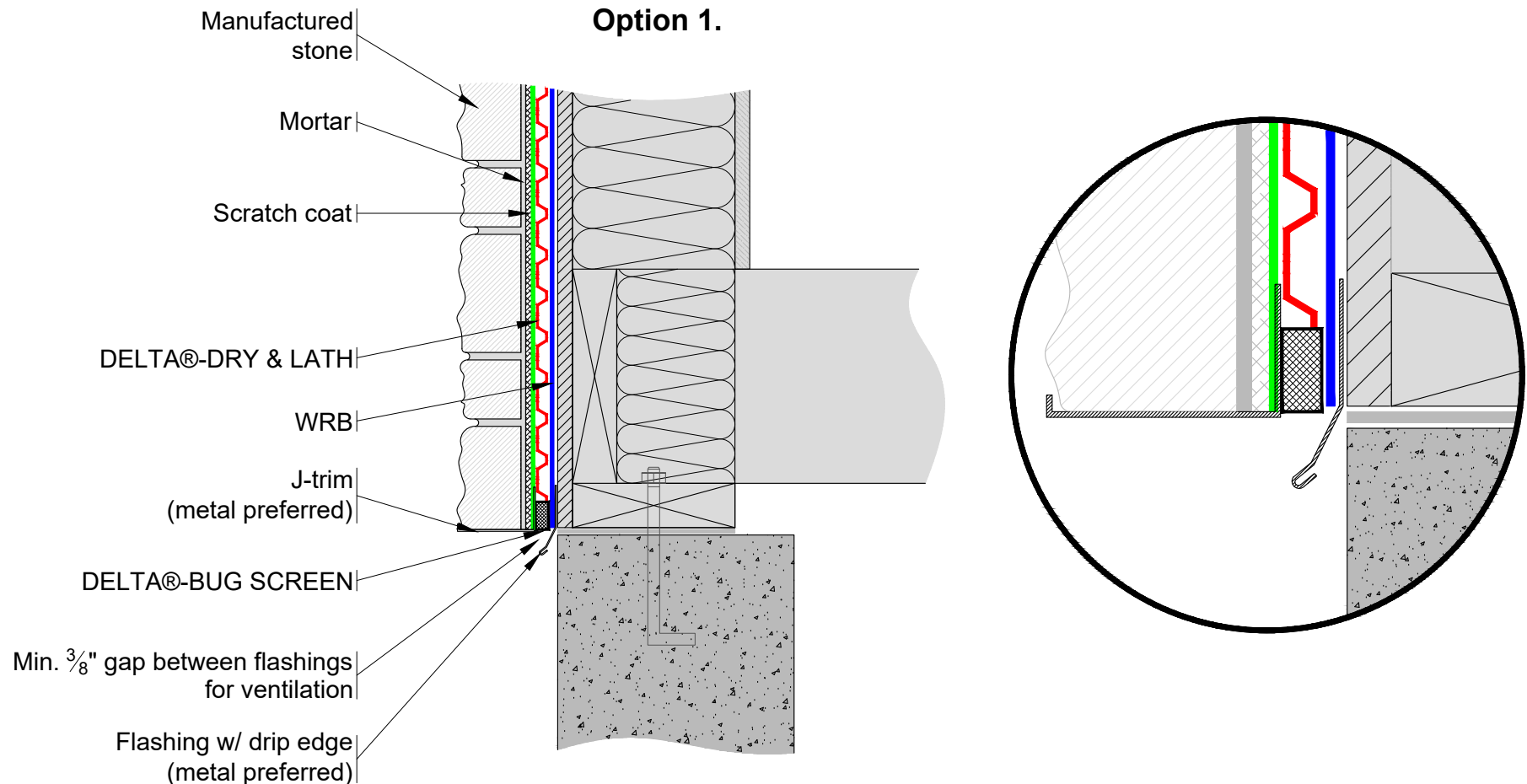
Date: November 27, 2108

File Name: DRY1_LATH



4655 DELTA WAY BEAMSVILLE, ON. L0R 1B4 CANADA
1-888-433-5824 or 1-905-563-3255

NOTE:
WRB (WATER-RESISTIVE BARRIER) TO BE
INSTALLED AS PER MANUFACTURER'S
SPECIFICATIONS



****For proper performance of DELTA®-DRY & LATH ensure top and bottom remain open to allow ventilation and drainage****

SUBSTANTIAL EFFORT HAS BEEN MADE TO ENSURE THAT THE INFORMATION IN THIS DETAIL DRAWING IS ACCURATE. DÖRKEN SYSTEMS INC. CANNOT ACCEPT RESPONSIBILITY FOR ANY ERRORS OR OVERSIGHTS IN THE USE OF THIS MATERIAL OR IN THE PREPARATION OF ARCHITECTURAL OR ENGINEERING PLANS. THE DESIGN PROFESSIONAL MUST RECOGNIZE THAT NO DESIGN DETAIL CAN SUBSTITUTE FOR EXPERIENCED ENGINEERING AND PROFESSIONAL JUDGEMENT.

TITLE:

**DELTA®-DRY LATH RAINSCREEN APPLICATION
WITH MANUFACTURED STONE BOTTOM OF WALL
DETAIL OPTION 1**

DRAWN BY: Krzysztof Apiasz C. Tech., CPHC®

DATE: November 27, 2108
SCALE: NTS

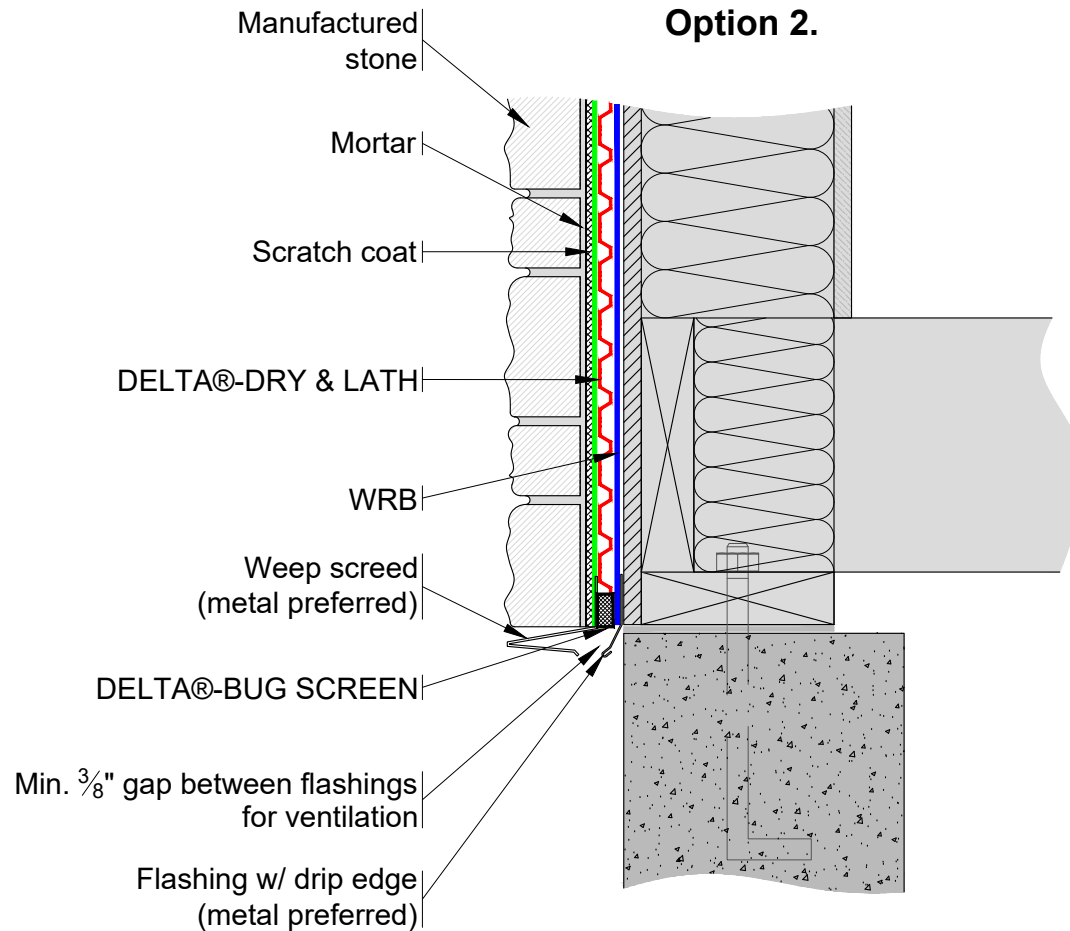
FILE NAME:
DRY&LATH_B1

DÖRKEN



4655 DELTA WAY BEAMSVILLE, ON. L0R 1B4 CANADA
1-888-433-5824 or 1-905-563-3255

NOTE:
WRB (WATER-RESISTIVE BARRIER) TO BE
INSTALLED AS PER MANUFACTURER'S
SPECIFICATIONS



****For proper performance of DELTA®-DRY & LATH ensure top and bottom remain open to allow ventilation and drainage****

SUBSTANTIAL EFFORT HAS BEEN MADE TO ENSURE THAT THE INFORMATION IN THIS DETAIL DRAWING IS ACCURATE. DÖRKEN SYSTEMS INC. CANNOT ACCEPT RESPONSIBILITY FOR ANY ERRORS OR OVERSIGHTS IN THE USE OF THIS MATERIAL OR IN THE PREPARATION OF ARCHITECTURAL OR ENGINEERING PLANS. THE DESIGN PROFESSIONAL MUST RECOGNIZE THAT NO DESIGN DETAIL CAN SUBSTITUTE FOR EXPERIENCED ENGINEERING AND PROFESSIONAL JUDGEMENT.

TITLE:

**DELTA®-DRY & LATH RAINSCREEN APPLICATION
WITH MANUFACTURED STONE BOTTOM OF WALL
DETAIL OPTION 2**

DRAWN BY: Krzysztof Apiasz C. Tech., CPHC®

DATE: November 27, 2018
SCALE: NTS

FILE NAME:
DRY&LATH_B2

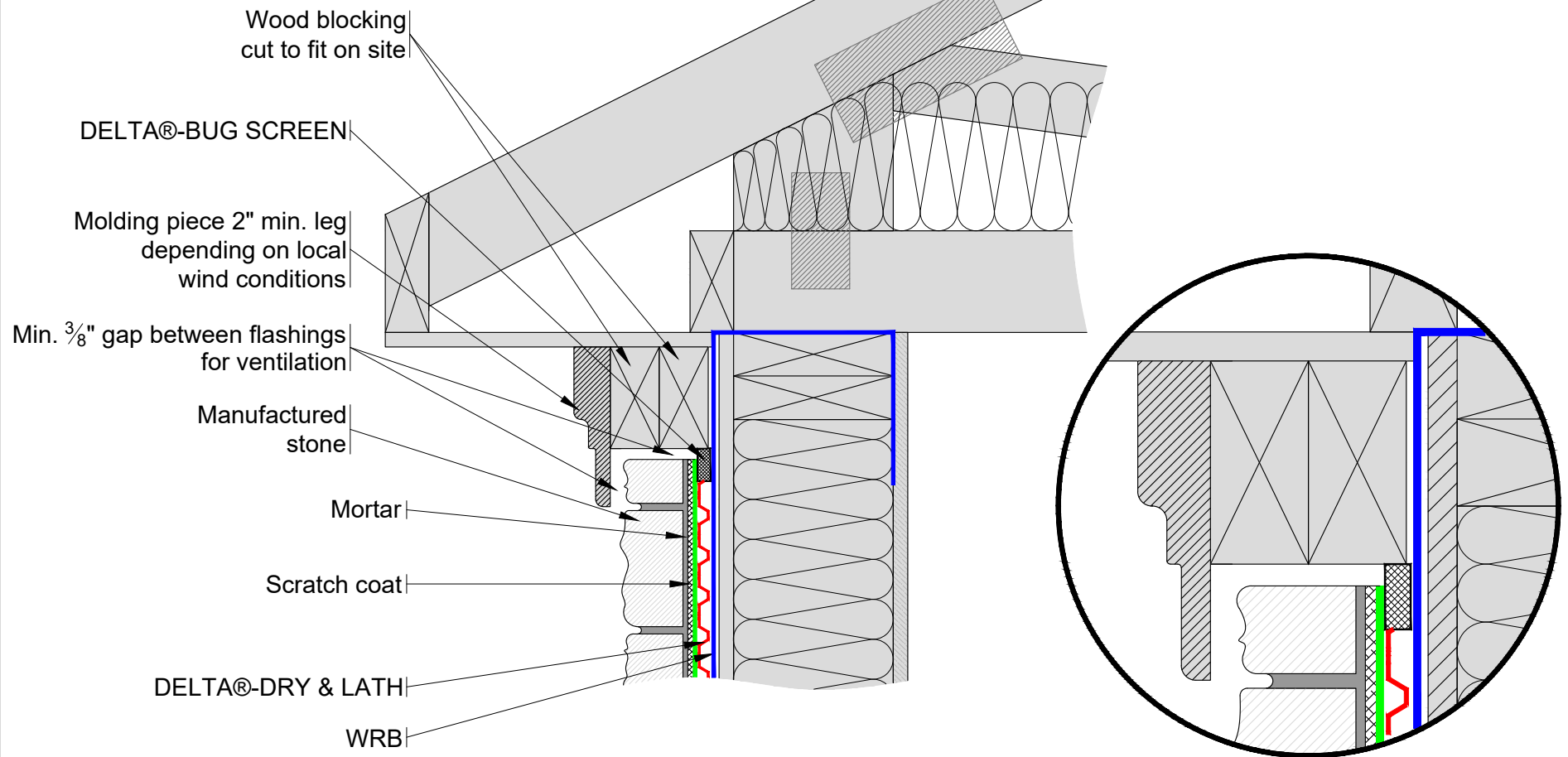
DÖRKEN



4655 DELTA WAY BEAMSVILLE, ON. L0R 1B4 CANADA
1-888-433-5824 or 1-905-563-3255

NOTE:
WRB (WATER-RESISTIVE BARRIER) TO BE
INSTALLED AS PER MANUFACTURER'S
SPECIFICATIONS

Option 1.



****For proper performance of DELTA®-DRY & LATH ensure top and bottom remain open to allow ventilation and drainage****

SUBSTANTIAL EFFORT HAS BEEN MADE TO ENSURE THAT THE INFORMATION IN THIS DETAIL DRAWING IS ACCURATE. DÖRKEN SYSTEMS INC. CANNOT ACCEPT RESPONSIBILITY FOR ANY ERRORS OR OVERSIGHTS IN THE USE OF THIS MATERIAL OR IN THE PREPARATION OF ARCHITECTURAL OR ENGINEERING PLANS. THE DESIGN PROFESSIONAL MUST RECOGNIZE THAT NO DESIGN DETAIL CAN SUBSTITUTE FOR EXPERIENCED ENGINEERING AND PROFESSIONAL JUDGEMENT.

TITLE:

DELTA®-DRY & LATH RAINSCREEN APPLICATION WITH MANUFACTURED STONE TOP OF WALL DETAIL OPTION 1

DRAWN BY: Krzysztof Apiasz C. Tech., CPHC®

DATE: November 27, 2018
SCALE: NTS

FILE NAME:
DRY&LATH_T1

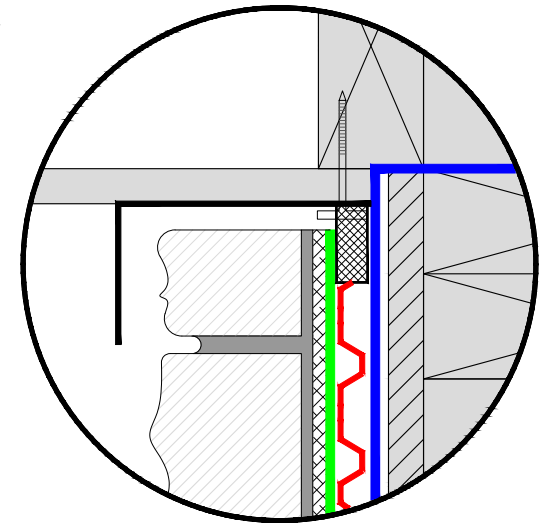
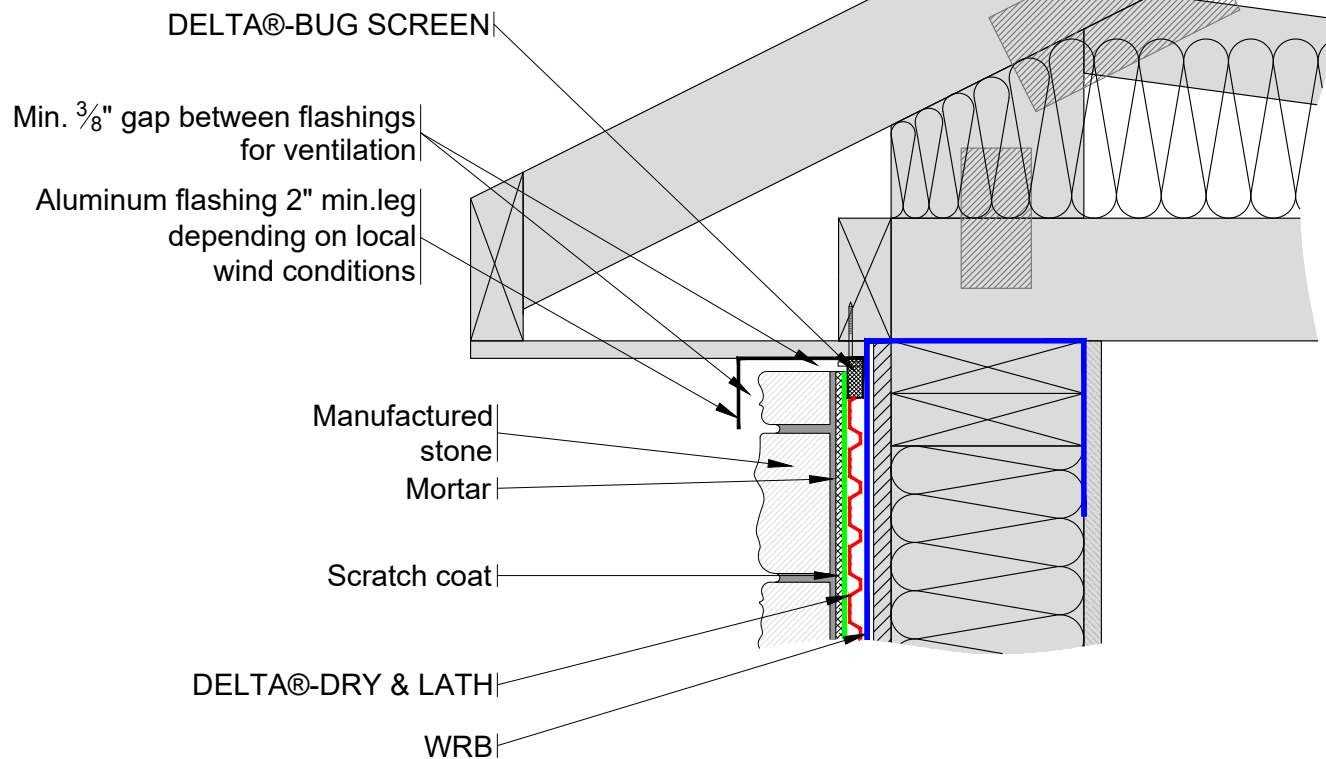
DÖRKEN



4655 DELTA WAY BEAMSVILLE, ON. L0R 1B4 CANADA
1-888-433-5824 or 1-905-563-3255

NOTE:
WRB (WATER-RESISTIVE BARRIER) TO BE
INSTALLED AS PER MANUFACTURER'S
SPECIFICATIONS

Option 2. "L" flashing



For proper performance of DELTA®-DRY & LATH ensure top and bottom remain open to allow ventilation and drainage

SUBSTANTIAL EFFORT HAS BEEN MADE TO ENSURE THAT THE INFORMATION IN THIS DETAIL DRAWING IS ACCURATE. DÖRKEN SYSTEMS INC. CANNOT ACCEPT RESPONSIBILITY FOR ANY ERRORS OR OVERSIGHTS IN THE USE OF THIS MATERIAL OR IN THE PREPARATION OF ARCHITECTURAL OR ENGINEERING PLANS. THE DESIGN PROFESSIONAL MUST RECOGNIZE THAT NO DESIGN DETAIL CAN SUBSTITUTE FOR EXPERIENCED ENGINEERING AND PROFESSIONAL JUDGEMENT.

TITLE:

DELTA®-DRY & LATH RAINSCREEN APPLICATION WITH MANUFACTURED STONE TOP OF WALL DETAIL OPTION 2

DRAWN BY: Krzysztof Apiasz C. Tech., CPHC®

DATE: November 27, 2018
SCALE: NTS

FILE NAME:
DRY&LATH_T2

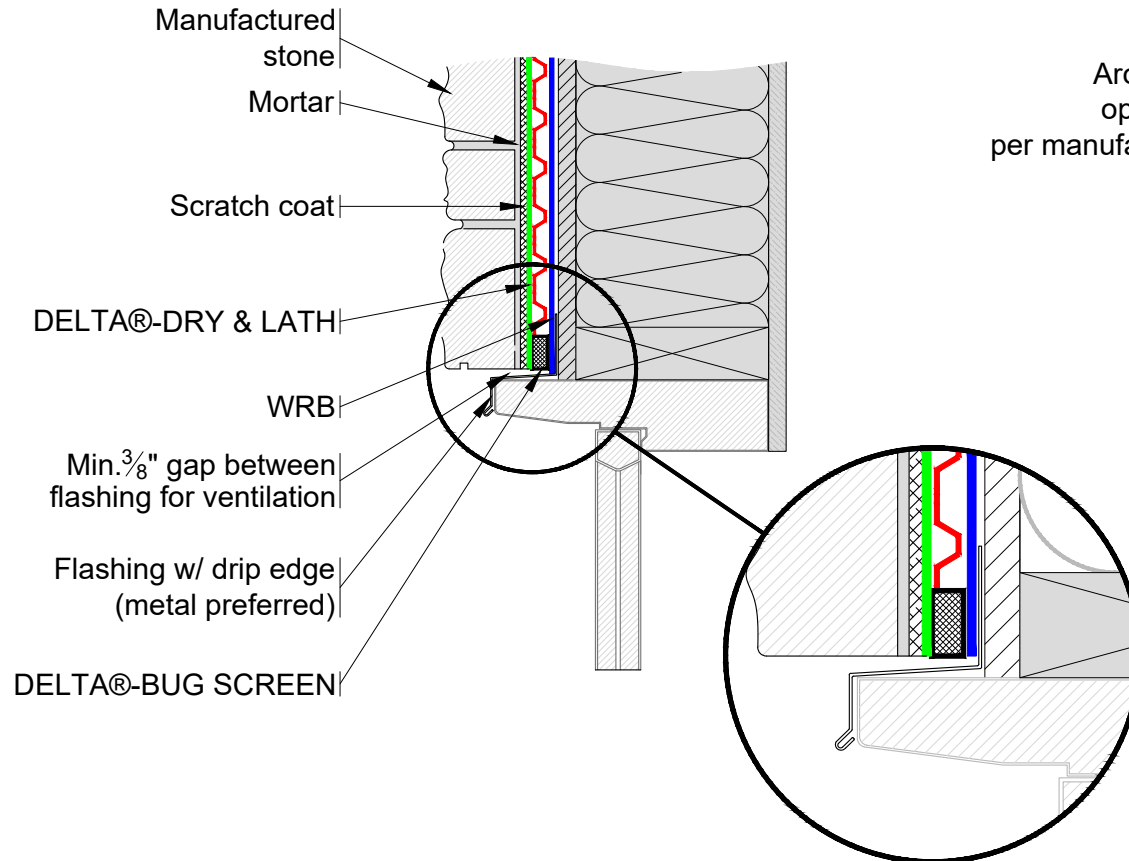
DÖRKEN



4655 DELTA WAY BEAMSVILLE, ON. L0R 1B4 CANADA
1-888-433-5824 or 1-905-563-3255

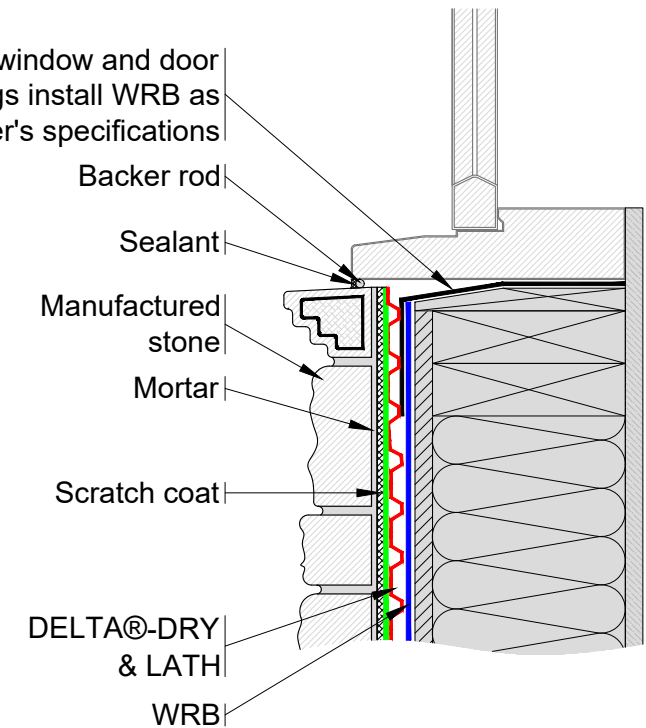
NOTE:
WRB (WATER-RESISTIVE BARRIER) TO BE
INSTALLED AS PER MANUFACTURER'S
SPECIFICATIONS

TOP OF WINDOW DETAIL



BOTTOM OF WINDOW DETAIL

Around window and door openings install WRB as per manufacturer's specifications



****For proper performance of DELTA®-DRY & LATH ensure top and bottom remain open to allow ventilation and drainage****

SUBSTANTIAL EFFORT HAS BEEN MADE TO ENSURE THAT THE INFORMATION IN THIS DETAIL DRAWING IS ACCURATE. DRKEN SYSTEMS INC. CANNOT ACCEPT RESPONSIBILITY FOR ANY ERRORS OR OVERSIGHTS IN THE USE OF THIS MATERIAL OR IN THE PREPARATION OF ARCHITECTURAL OR ENGINEERING PLANS. THE DESIGN PROFESSIONAL MUST RECOGNIZE THAT NO DESIGN DETAIL CAN SUBSTITUTE FOR EXPERIENCED ENGINEERING AND PROFESSIONAL JUDGEMENT.

TITLE:

DELTA®-DRY & LATH RAINSCREEN APPLICATION WITH MANUFACTURED STONE WINDOW DETAIL

DRAWN BY: Krzysztof Apiasz C. Tech., CPHC®

November 27, 2108
SCALE: NTS

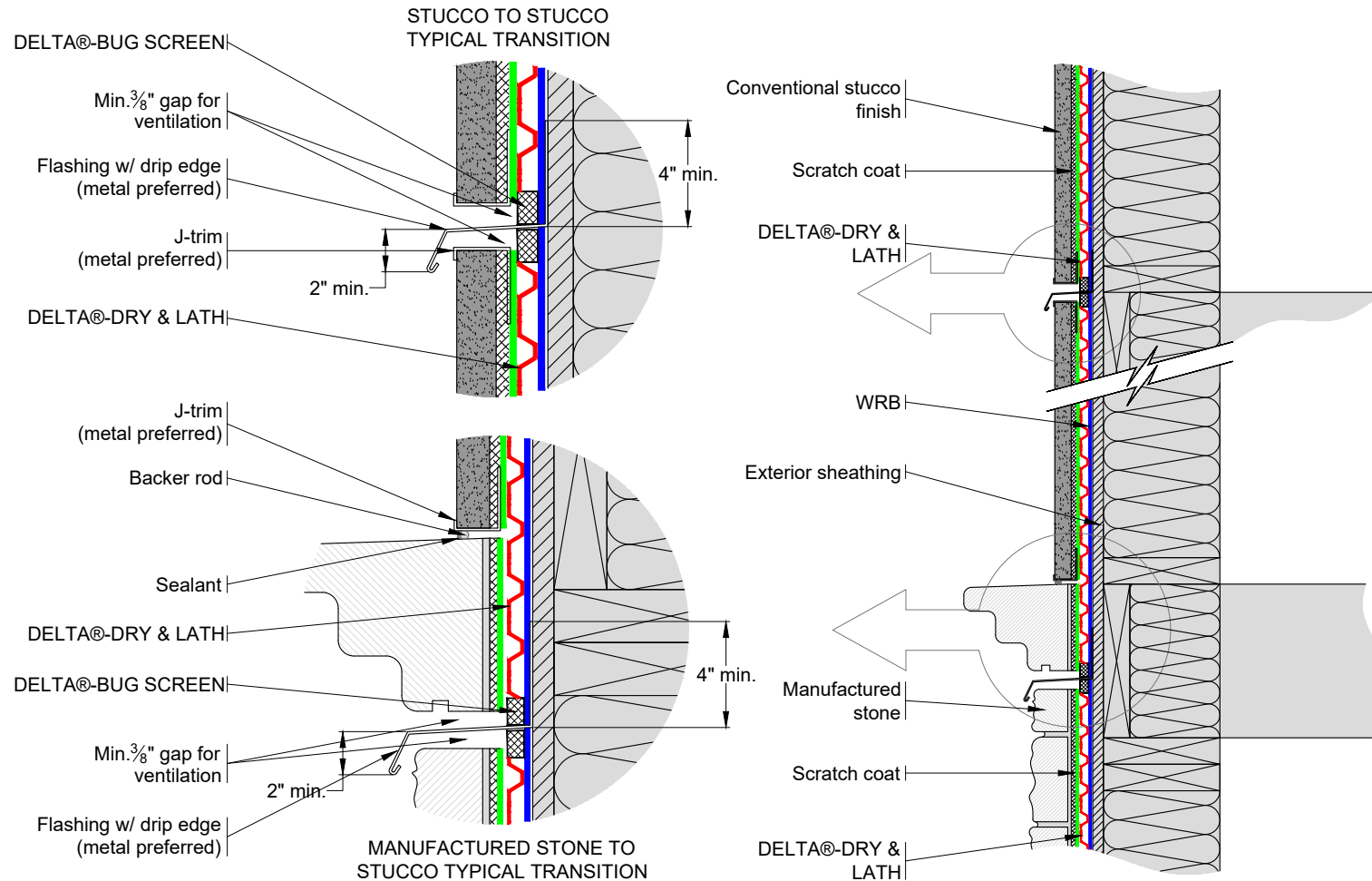
FILE NAME:
DRY&LATH_W1

DÖRKEN



4655 DELTA WAY BEAMSVILLE, ON. L0R 1B4 CANADA
1-888-433-5824 or 1-905-563-3255

NOTE:
WRB (WATER-RESISTIVE BARRIER) TO BE
INSTALLED AS PER MANUFACTURER'S
SPECIFICATIONS



****For proper performance of DELTA®-DRY & LATH ensure top and bottom remain open to allow ventilation and drainage****

SUBSTANTIAL EFFORT HAS BEEN MADE TO ENSURE THAT THE INFORMATION IN THIS DETAIL DRAWING IS ACCURATE. DÖRKEN SYSTEMS INC. CANNOT ACCEPT RESPONSIBILITY FOR ANY ERRORS OR OVERSIGHTS IN THE USE OF THIS MATERIAL OR IN THE PREPARATION OF ARCHITECTURAL OR ENGINEERING PLANS. THE DESIGN PROFESSIONAL MUST RECOGNIZE THAT NO DESIGN DETAIL CAN SUBSTITUTE FOR EXPERIENCED ENGINEERING AND PROFESSIONAL JUDGEMENT.

TITLE:

TYPICAL WALL TRANSITION DETAILS OPTION 2.

DRAWN BY: Krzysztof Apriasz C. Tech., CPHC®

DATE: November 27, 2018
 SCALE: NTS

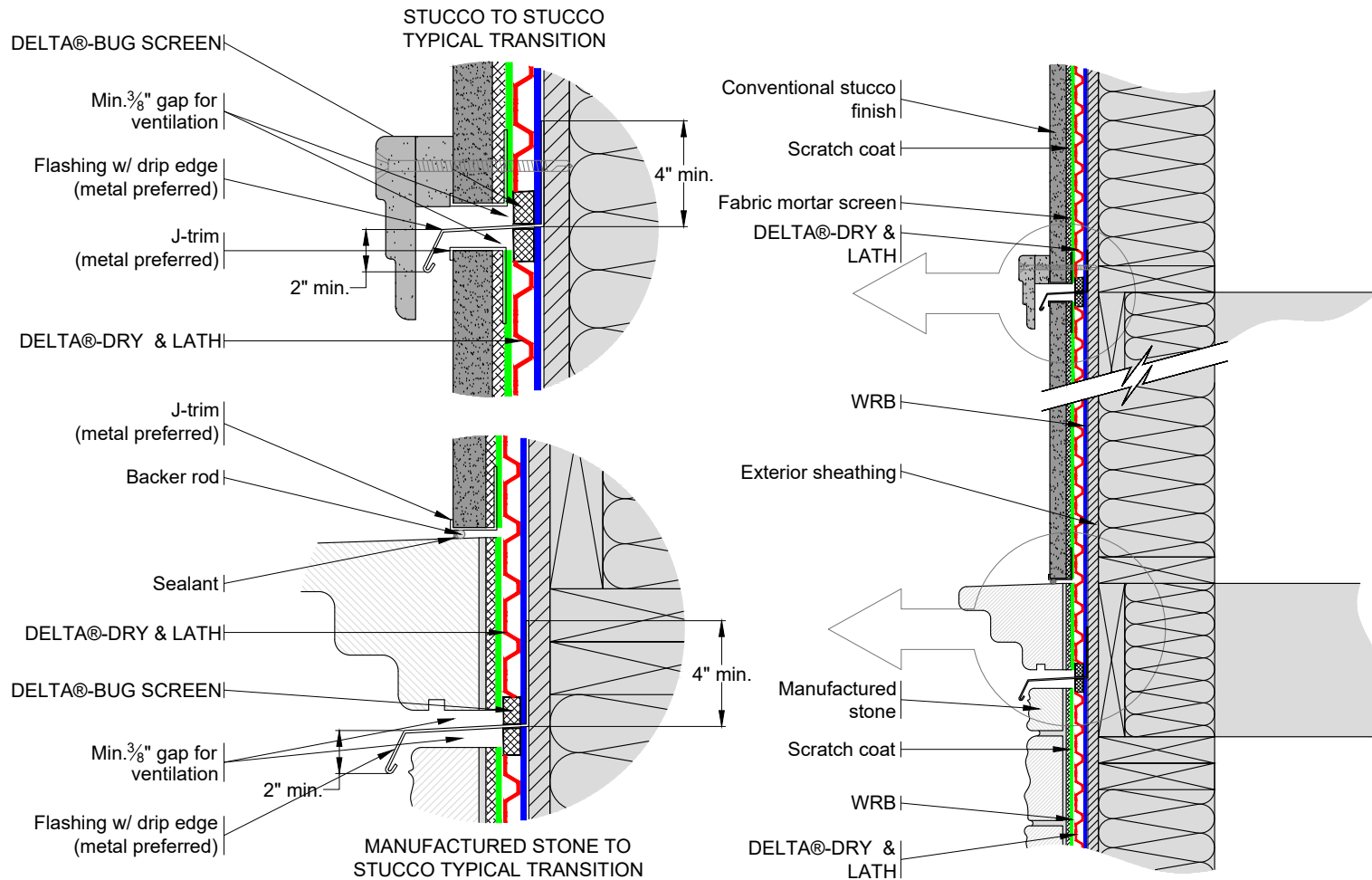
FILE NAME:
 DRY&LATH_TRANSITION

DÖRKEN



4655 DELTA WAY BEAMSVILLE, ON. L0R 1B4 CANADA
 1-888-433-5824 or 1-905-563-3255

NOTE:
WRB (WATER-RESISTIVE BARRIER) TO BE
INSTALLED AS PER MANUFACTURER'S
SPECIFICATIONS



****For proper performance of DELTA®-DRY & LATH ensure top and bottom remain open to allow ventilation and drainage****

SUBSTANTIAL EFFORT HAS BEEN MADE TO ENSURE THAT THE INFORMATION IN THIS DETAIL DRAWING IS ACCURATE. DÖRKEN SYSTEMS INC. CANNOT ACCEPT RESPONSIBILITY FOR ANY ERRORS OR OVERSIGHTS IN THE USE OF THIS MATERIAL OR IN THE PREPARATION OF ARCHITECTURAL OR ENGINEERING PLANS. THE DESIGN PROFESSIONAL MUST RECOGNIZE THAT NO DESIGN DETAIL CAN SUBSTITUTE FOR EXPERIENCED ENGINEERING AND PROFESSIONAL JUDGEMENT.

TITLE:

TYPICAL TRANSITION DETAIL OPTION 2.

DRAWN BY: Krzysztof Apiasz C. Tech., CPHC®

DATE: November 27, 2108
 SCALE: NTS

FILE NAME:
 DRY&LATH_TRANSITION2

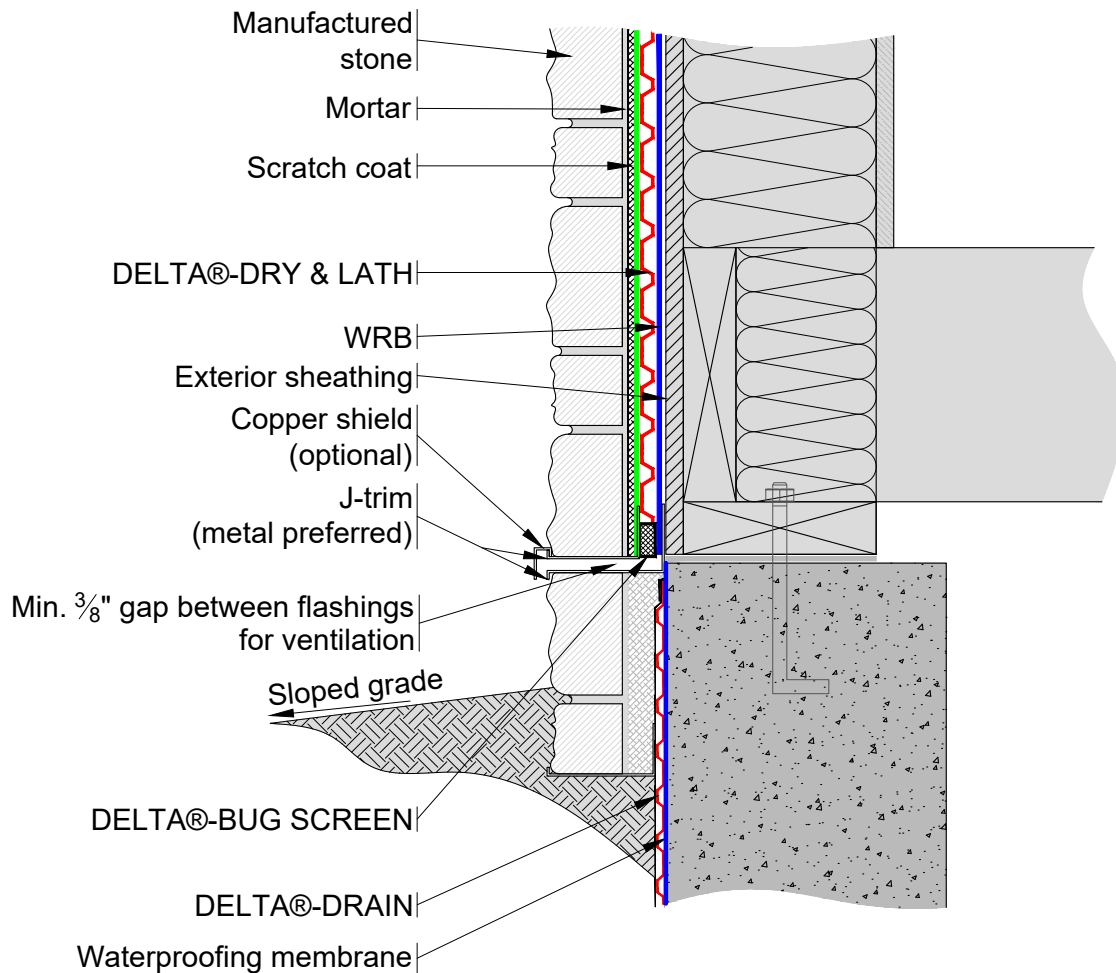
DÖRKEN



4655 DELTA WAY BEAMSVILLE, ON. L0R 1B4 CANADA
 1-888-433-5824 or 1-905-563-3255

NOTE:

WRB (WATER-RESISTIVE BARRIER) TO BE
INSTALLED AS PER MANUFACTURER'S
SPECIFICATIONS



****For proper performance of DELTA®-DRY & LATH ensure top and bottom remain open to allow ventilation and drainage****

SUBSTANTIAL EFFORT HAS BEEN MADE TO ENSURE THAT THE INFORMATION IN THIS DETAIL DRAWING IS ACCURATE. DÖRKEN SYSTEMS INC. CANNOT ACCEPT RESPONSIBILITY FOR ANY ERRORS OR OVERSIGHTS IN THE USE OF THIS MATERIAL OR IN THE PREPARATION OF ARCHITECTURAL OR ENGINEERING PLANS. THE DESIGN PROFESSIONAL MUST RECOGNIZE THAT NO DESIGN DETAIL CAN SUBSTITUTE FOR EXPERIENCED ENGINEERING AND PROFESSIONAL JUDGEMENT.

TITLE:

**MANUFACTURED STONE BELOW GRADE
WITH DELTA®-DRY & LATH**

DRAWN BY: Krzysztof Apiasz C. Tech., CPHC®

Date: November 27, 2018

File Name: DRY&LATH1_MSB

DÖRKEN

DELTA®

4655 DELTA WAY BEAMSVILLE, ON. L0R 1B4 CANADA
1-888-433-5824 or 1-905-563-3255